

SAILOR 6120/30/40/50 System



SAILOR 6120/30/40/50 System

User manual

Document number: 98-131590-A

Release date: May 25, 2011

Disclaimer

Any responsibility or liability for loss or damage in connection with the use of this product and the accompanying documentation is disclaimed by Thrane & Thrane. The information in this manual is provided for information purposes only, is subject to change without notice and may contain errors or inaccuracies.

Manuals issued by Thrane & Thrane are periodically revised and updated. Anyone relying on this information should acquire the most current version e.g. from <http://www.thrane.com> or from the distributor.

Thrane & Thrane is not responsible for the content or accuracy of any translations or reproductions, in whole or in part, of this manual from any other source.

Copyright

© 2011 Thrane & Thrane A/S. All rights reserved.

GPL notification

The software included in this product contains copyrighted software that is licensed under the GPL/LGPL. A copy of those licenses is included in this document in the last appendix. You may obtain the complete corresponding source code from us for a period of three years after our last shipment of this product, which will be no earlier than December 2015, by sending a money order or check for DKK 50 to:

SW Technology/GPL Compliance,
Thrane & Thrane A/S,
Lundtoftegaardsvej 93D
2800 Lyngby
DENMARK

Please write "source for product <product name>" in the memo line of your payment (replace <product name> with e.g. SAILOR 3027 SSA Terminal).

You may also find a copy of the source at <http://www.thrane.com/foss>.

This offer is valid to anyone in receipt of this information.

Warranties

Any attempt to install or execute software not supplied by Thrane & Thrane on the devices in this system will result in the warranty being void. Any attempt to modify the software on these devices in a way not specified by Thrane & Thrane will result in the warranty being void.

Trademark Acknowledgements

- **Thrane & Thrane** is a registered trademark of Thrane & Thrane A/S in the European Union and the United States.
- **Inmarsat** is a registered trademark of the International Maritime Satellite Organisation (IMSO) and is licensed by IMSO to Inmarsat Limited and Inmarsat Ventures plc.
- **SAILOR** is a registered trademark of Thrane & Thrane A/S in the European Union, the United States and other countries.
- Other product and company names mentioned in this manual may be trademarks or trade names of their respective owners.

Safety summary

The following general safety precautions must be observed during all phases of operation, service and repair of this equipment. Failure to comply with these precautions or with specific warnings elsewhere in this manual violates safety standards of design, manufacture and intended use of the equipment. Thrane & Thrane assumes no liability for the customer's failure to comply with these requirements.

Observe marked areas

Under extreme heat conditions do not touch areas of the units that are marked with this symbol, as it may result in injury.



Microwave radiation hazards

During transmission the antenna in this system radiates Microwave Power. This radiation may be hazardous to humans close to the antenna. When the system is powered, make sure that nobody gets closer than the recommended minimum safety distance of 0.3 m (1 ft.).

Keep away from live circuits

Operating personnel must not remove equipment covers. Only qualified maintenance personnel must make component replacement and internal adjustment. Under certain conditions, dangerous voltages may exist even with the cable removed. To avoid injuries, always disconnect power and discharge circuits before touching them.

Compass safe distance

Minimum safety distance: 5 m from the Mini-C Terminal.

About the manual

Naming conventions

This manual covers four different types of system. For information that applies to all four types, the following naming conventions are used:

Common name	Used for
Mini-C System	SAILOR 6120 SSA System SAILOR 6130 LRIT System SAILOR 6140 Maritime System SAILOR 6150 Non-SOLAS System
Mini-C Terminal	SAILOR 3027 SSA Terminal SAILOR 3027 LRIT Terminal SAILOR 3027 Maritime Terminal SAILOR 3027 Non-SOLAS Terminal

Intended readers

This manual is a user manual for the SAILOR 6120/30/40/50 Mini-C Systems. The manual is intended for anyone who is using or intends to use any of these four systems. No specific skills are required to operate the SAILOR 6120/30/40/50. However, it is important that you observe all safety requirements listed in the beginning of this manual, and operate the system according to the guidelines in this manual.

Manual overview

Note that this manual does not cover installation of the system. For information on installation and initial configuration, refer to *SAILOR 6120/30/40/50 System, Installation manual [1]*. Part numbers for related manuals are listed in the next section.

This manual has the following chapters:

- **Introduction** contains an overview of the SAILOR 6120/30/40/50 and a brief description of each unit in the system.
- **Getting started** explains how start up the system. It also contains a short guide to the most important functions.
- **Using easyMail** explains how to set up and use the system with the easyMail application from a connected computer or SAILOR 6007 Message Terminal.
- **Using Distress and SSA buttons** explains how to use connected Distress buttons and SSA buttons.
- **Troubleshooting** contains a short troubleshooting guide and explains how to check the status of the system.

Related documents

The below list shows the documents related to this manual and to the SAILOR 6120/30/40/50.

Ref	Title and description	Document number
[1]	SAILOR 6120/30/40/50 System, Installation manual	98-131589
[2]	SAILOR 6006 and SAILOR 6007 Message Terminal, Installation manual	98-130088
[3]	THRANE 6194 Terminal Control Unit, Installation and user manual	98-131593

Typography

In this manual, typography is used as indicated below:

Bold is used for the following purposes:

- To emphasize words.
Example: “Do **not** touch the antenna”.
- To indicate what the user should select in the user interface.
Example: “Select **SETTINGS** > **LAN**”.

Italic is used to emphasize the paragraph title in cross-references.

Example: “For further information, see *Connecting Cables* on page...”.

Contents

Chapter 1 Introduction

Welcome	1
System overview	2
System units	3
User interface	4
The Inmarsat C services	5

Chapter 2 Getting started

Registration	9
Starting up the system	10
User interfaces	10

Chapter 3 Using easyMail

Overview of easyMail	14
Distress functions (only SAILOR 6150)	17
Working with messages	22
Position reporting	34
Receiving EGCs	36
Network status and settings	38
Viewing system details	40
Viewing or changing position information	41
Viewing status	42
Viewing the Info log	42
Setting up the default ISP	43

	Setting up the default LESes	43
	Setting up reception of EGCs	44
	Setting up ENIDs	45
	Setting up the Land Earth Stations (LES)	46
	Setting up the Inmarsat Service Providers (ISP)	48
	Entering the mobile number	50
	Setting the local time	51
	Setting up password protection	52
	Setting the language	52
	Setting up PC communication with the Mini-C Terminal ...	53
	Setting up easyMail	56
Chapter 4	Using Distress and SSA buttons	
	Sending a Distress Alert (SAILOR 6150 only)	60
	Using SSA buttons (SAILOR 6120 only)	62
Chapter 5	Troubleshooting	
	Getting support	63
	Updating software	64
	Troubleshooting guide	66
	Status signalling in easyMail	67
	Service and repair	68
App. A	Conformity	
App. B	GNU License texts	
	GNU General Public License	75

	GNU Lesser General Public License	79
Glossary	85
Index	89

Introduction

Welcome

Congratulations on the purchase of your Mini-C System!

With the Mini-C System you can send and receive data via satellite through the Inmarsat C network. Four variants of the Mini-C System are described in this manual:

- SAILOR 6120 SSA System
- SAILOR 6130 LRIT System
- SAILOR 6140 Maritime System
- SAILOR 6150 Non-SOLAS System

Each of these systems uses its own variant of the SAILOR 3027 Mini-C Terminal.



This chapter has the following sections:

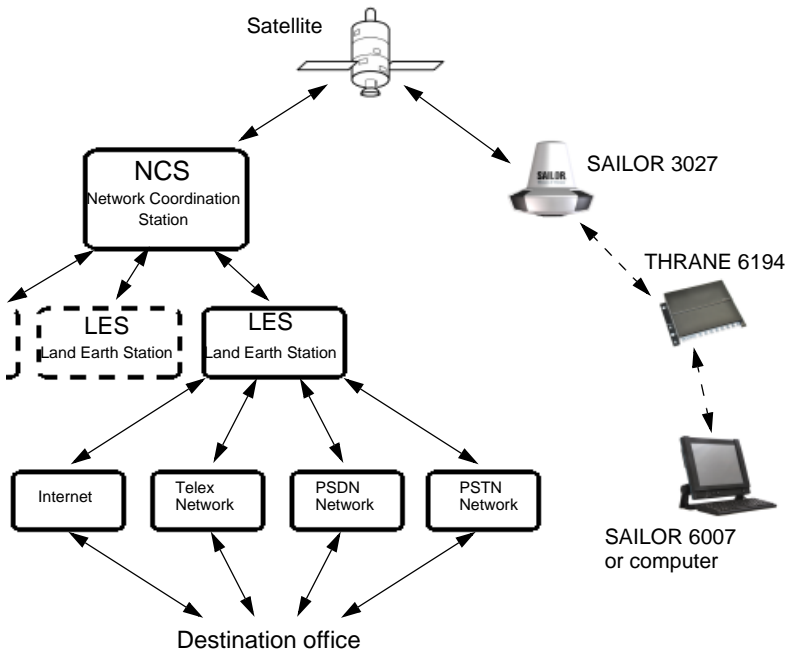
- *System overview*
- *System units*
- *User interface*
- *The Inmarsat C services*

System overview

The SAILOR 6120/30/40/50 Mini-C System

The Inmarsat C satellite network is the link between the SAILOR 6120/30/40/50 and the destination office. It uses four geostationary satellites to cover the world. For each satellite there is an NCS, Network Coordination Station, handling registration of the mobile unit (in this case the SAILOR 3027) in the Inmarsat C system.

Each NCS is associated with a number of LESs, Land Earth Stations, which handle the transmission between the mobile units and the destination office.



The SAILOR 3027 can work as a standalone system automatically transmitting data on the Inmarsat C network, or you can connect alarm buttons and/or a Message Terminal or a computer through the THRANE 6194 Terminal Control Unit.

System units

The basic Mini-C System consists of a power supply and the following units:

- **SAILOR 3027 Mini-C Terminal.**
Contains both transceiver, GPS receiver and omni-directional antenna for the Inmarsat C system. Connects to other equipment, primarily the THRANE 6194, through a CAN interface carrying both power and bi-directional communication.
- **THRANE 6194 Terminal Control Unit (only included with SAILOR 6120 and SAILOR 6150).**
Enables you to connect the SAILOR 3027 with other equipment, such as Distress buttons, SSA (Ship Security Alert) buttons or a computer or Message Terminal. The THRANE 6194 comes with the SAILOR 6120 and SAILOR 6150 systems only, but is available for the other systems as well.
- **SAILOR 6007 Message Terminal (not included. Can be purchased separately).**
When the easyMail program is installed, you can send and receive messages, monitor system status and test the system. The SAILOR 6007 has a touch-screen interface but can also be operated from a connected keyboard.



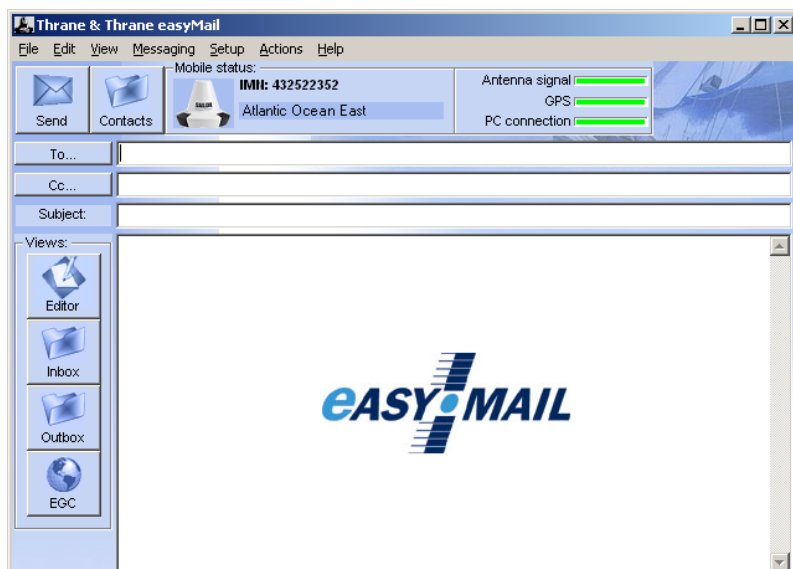
For a more detailed description of the units, refer to the installation manual for the SAILOR 6120/30/40/50 Mini-C System.

User interface

The basic Mini-C System does not have a dedicated user interface. To have a user interface you must connect a THRANE 6194 Terminal Control Unit and a computer or SAILOR 6007 Message Terminal with the easyMail application installed. For details, refer to *SAILOR 6120/30/40/50 System, Installation manual [1]*.

easyMail

easyMail is a user interface for the Mini-C System. With easyMail you can send and receive messages, view system status and configure the system. To use easyMail you must have a THRANE 6194 Terminal Control Unit and a computer or SAILOR 6007 Message Terminal with the easyMail application installed. For information on how to get started with easyMail, see *easyMail application* on page 10.



For details on how to use easyMail, see *Using easyMail* on page 13.

The Inmarsat C services

The SAILOR 6120/30/40/50 supports the following services through the Inmarsat C system. For a description of these services, see the next sections.

- Distress Alerting
- Enhanced Group Call (EGC)
- Message transmission
- Position reporting
- Polling

Distress Alerting and Distress priority messaging

If a ship or a crew is in grave and imminent danger, maritime Inmarsat C and some mini-C models are used to send a Distress Alert by pressing a dedicated Distress button.

The alert contains information on the ship's identity (Inmarsat C mobile number), ship's position (latitude and longitude), ship's course and speed, nature of Distress, date / time when the alert was sent and time when the ship's position was last updated.

All Distress Alerts are automatically routed through the addressed LES to an associated Maritime Rescue Coordination Centre (MRCC), which will establish communication with the ship and launch the search and rescue (SAR) operation the ship may need.

After sending the initial Distress Alert, if time permits, it is possible to send a more detailed Distress priority message to give more details about the Distress event and ask for the required assistance.

The Distress priority message should be sent via the same LES as the Distress Alert, to ensure that it is delivered automatically to the same MRCC.

Enhanced Group Calling (EGC)

The Inmarsat C system has a special capability known as Enhanced Group Call (EGC), which enables authorised information providers to broadcast messages to selected groups of ships. Reception by ships that are fitted with Inmarsat C or mini-C terminals is automatic. A special header is added by the system to the EGC message to indicate the group of mobile terminals or the geographical area to which the message is to be sent.

Two EGC services are available:

- EGC SafetyNET - the international safety service, which allows authorised maritime safety information (MSI) providers, such as meteorological offices, hydrographic officers and MRCCs to broadcast messages to all ships in certain geographical areas.

MSI includes navigational and meteorological warnings, meteorological forecasts and other urgent safety-related information, which is addressed to all ships in NAVAREA / METAREA, user-defined circular or rectangular area or coastal area.

Reception of SafetyNET messages is a mandatory function of the GMDSS equipment that is required to be carried in certain ships under the provision of the International Maritime Organisation's Safety Of Life At Sea (SOLAS) convention.

- EGC FleetNET - the international commercial service, which allows authorised information providers, such as commercial subscription services, shipping companies or governments to broadcast messages to selected groups of vessels, each of which has registered with the information provider and been added to a FleetNET closed group / network. The mobile terminals on these groups of vessels are identified by an ENID (EGC Network IDentification) common to the group.

For further information on EGC via Inmarsat C read the Inmarsat Maritime Communications Handbook, Chapter 6, or visit the Inmarsat Maritime Safety Services section of the Inmarsat website www.inmarsat.com.

Message transmission

Ship to shore: Text and data from Inmarsat C and mini-C terminals can be sent to:

- An e-mail address
- Any telex or fax (text, one way only) number
- Any computer connected to the public telephone and data networks (PSTN and PSDN), using a telephone modem number
- Another Inmarsat C / mini-C terminal
- A Short (or Special) Access Code (SAC).

The maximum message size is up to 10 kb for the Mini-C Terminal.

Shore to ship: Text and data can be sent via telex, e-mail and the data and telephone (PSDN / PSTN) networks. To be able to send messages to ships, a shore-based message originator needs to be registered (to have a commercial service agreement) with an Inmarsat C service provider of their choice.

Ship to ship: Messages can also be sent in a ship-to-ship direction from one Inmarsat C / mini-C terminal to another.

Position reporting

Most of Inmarsat C and mini-C models are integrated with Global Navigational Satellite System (GNSS) receivers, such as GPS, to provide highly reliable, round-the-clock position information of a ship, which can be used for position reporting.

The position reporting service is based on using the data reporting and polling protocol and allows a shore-based subscriber (base station or shipping company) to request position information from a vessel, as a single report or automatic reception at fixed intervals, e.g. every six hours.

A ship's terminal can also be programmed to send regular position reports to any desired destination.

The position report includes ship's identity, latitude, longitude, course, speed, date / time of the position report and time of the last position update.

In the Mini-C System, the report is sent to a DNID (Data reporting Network Identification) that is effectively a mailbox created on some LESes. The Mini-C Terminal sends its reports to this mailbox and other tracking systems can then access and empty the mailbox.

Up to 255 mobile terminals can use the same DNID, and the specific terminal is identified by a member number between 1 and 255.

Before the position reporting feature can be used the DNID must be created on the LES. Once the DNID account is created, the LES can download the DNID information to the desired terminals, thereby enabling them to send reports to the DNID.

Data reporting and polling

Inmarsat C users may need to acquire information (short data reports) from vessels, or to collect data automatically at fixed or variable intervals.

The data reporting service allows for the transmission of information, in packets of up to 32 bytes on request or at prearranged intervals from Inmarsat C or mini-C terminals, to shore-based customers.

Polling allows shore-based customers to interrogate an Inmarsat C or mini-C terminal or group of terminals by sending a special polling command. The polling command instructs a terminal or group of terminals to send a data report immediately, start sending regular reports, change transmission schedule of reports or perform another task of the polled terminal(s).

Getting started

This chapter explains how to start up and log on your SAILOR 6120/30/40/50. It has the following sections:

- *Registration*
- *Starting up the system*
- *User interfaces*

Registration

Before using the SAILOR 3027 Mini-C Terminal on the Inmarsat-C system you must register the terminal to the system. In most cases the distributor has already filled in the SARF (Service Activation Registration Form) for your SAILOR 3027 when you receive your SAILOR 6120/30/40/50 Mini-C System.

For details on registration, see the Installation manual for the SAILOR 6120/30/40/50 Mini-C System.

After registration you must use a Message Terminal or a computer with the easyMail application to set up the mobile number in the SAILOR 3027. See *Using easyMail* on page 13.

Starting up the system

When the power source is on, the SAILOR 3027 automatically starts up and logs on to the satellite network.

With the Message terminal or a computer with easyMail installed you can see the logon status on screen.

User interfaces

If you are going to use your Mini-C System for anything other than automatically transmitting reports, you should have a user interface for accessing the Mini-C System. In Non-SOLAS Distress systems a user interface is mandatory, because of the need for safety communication.

You can control the Mini-C System using the easyMail application installed on a computer or on a SAILOR 6007 Message Terminal. The computer or the SAILOR 6007 Message Terminal must be connected via the LAN interface in the THRANE 6194 Terminal Control Unit to the Mini-C System.

For SAILOR 6150 systems only, you may also use a SAILOR 6006 Message Terminal. The SAILOR 6006 Message Terminal connects directly to the CAN interface.

easyMail application

Installing easyMail

To install the easyMail application on your computer, do as follows:

1. Insert the installation CD supplied with the THRANE 6194 into the CD drive of the computer.
The setup program should start up automatically. If not, run the file setup.exe from the CD drive.
2. Click **Install easyMail** and go through the InstallShield Wizard.

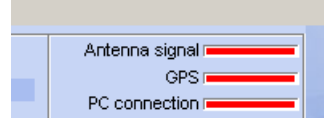
- When the Wizard is complete, you can start the application from the easyMail shortcut on the desktop, or from **Start > Programs > easyMail <version>**.

Accessing your Mini-C Terminal with easyMail

- Acquire a THRANE 6194 Terminal Control Unit, if it is not already part of your system.
- Connect your Mini-C Terminal to the CAN interface on the THRANE 6194 Terminal Control Unit.
- Connect a computer to the RS-232 port or the LAN port of the THRANE 6194 Terminal Control Unit.

Refer to *THRANE 6194 Terminal Control Unit, Installation and user manual [3]* for information on how to connect and set up the interfaces.

- Start the application from the easyMail shortcut on the desktop, or from Start > Programs > Thrane & Thrane > easyMail <version>.
- If the PC connection is not already set up (the PC connection bar is red), see *Setting up PC communication with the Mini-C Terminal* on page 53.



When all three bars are green, you can use the easyMail application to set up and control the Mini-C System, send and receive messages etc. See *Using easyMail* on page 13.

SAILOR 6006 Message Terminal (SAILOR 6150 only)

To get started with the SAILOR 6006 Message Terminal, do as follows:

1. Acquire a SAILOR 6006 Message Terminal from Thrane & Thrane.
2. Connect the THRANE 6194 to the Mini-C System as described in *SAILOR 6120/30/40/50 System, Installation manual [1]*.
3. Connect the Message Terminal to the CAN interface (T-connector) in the Mini-C System. See *SAILOR 6120/30/40/50 System, Installation manual [1]*.

You can now use the Message Terminal to set up and control the Mini-C System, send and receive messages etc.

Using easyMail

This chapter describes how to operate the SAILOR 6120/30/40/50 using the easyMail application. It has the following sections:

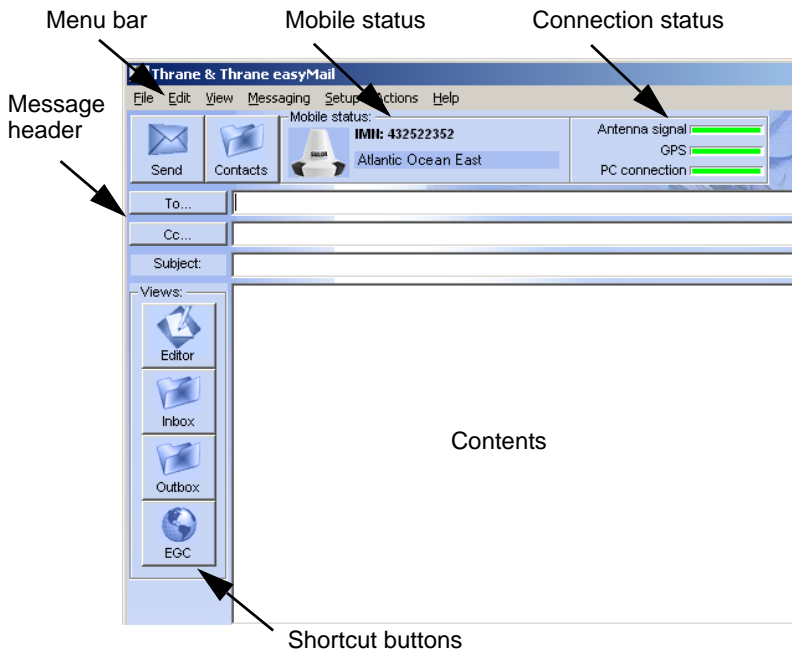
- *Overview of easyMail*
- *Distress functions (only SAILOR 6150)*
- *Working with messages*
- *Position reporting*
- *Receiving EGCs*
- *Network status and settings*
- *Viewing system details*
- *Viewing or changing position information*
- *Viewing status*
- *Viewing the Info log*
- *Setting up the default ISP*
- *Setting up the default LESes*
- *Setting up reception of EGCs*
- *Setting up ENIDs*
- *Setting up the Land Earth Stations (LES)*
- *Setting up the Inmarsat Service Providers (ISP)*
- *Entering the mobile number*
- *Setting the local time*
- *Setting up password protection*
- *Setting the language*
- *Setting up PC communication with the Mini-C Terminal*
- *Setting up easyMail*

Overview of easyMail

For information on how to install and start up easyMail, see *easyMail application* on page 10.

Overview of the screen

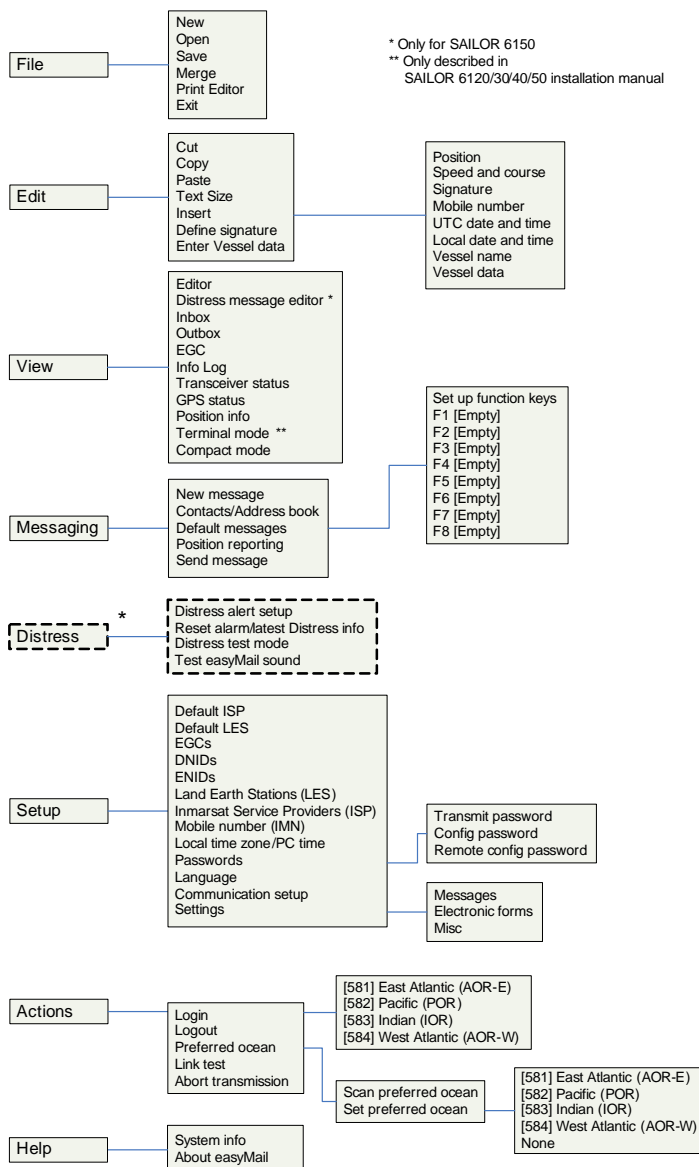
Below is an overview of the main screen in easyMail.



- The **menu bar** holds the menus. For an overview of all menus, see *Menu overview* on page 16

- **Mobile status** shows the status of your Mini-C Terminal. When connected and logged in, this field shows the mobile number (MMI) and the ocean region to which your Mini-C Terminal is logged in.
- **Connection status** shows the status of your PC connection, your mini-C antenna connection and your GPS connection.
- **Message header** contains the fields where you can enter recipients and subject for a message.
- **Shortcut buttons** may be used for quick access to some of the menu items. You can show/hide the shortcut buttons under **View > Compact mode**.
- **Contents**. Depending on the selected view, this area can show your message text or e.g. received messages or EGCs.

Menu overview



Distress functions (only SAILOR 6150)

Writing a Distress priority message (only SAILOR 6150)

Note

Distress priority messages are sent to the MRCC only.

Distress priority messages must be written in English.

To write a Distress priority message, do as follows:

1. From the menu bar, select **View > Distress message editor**.
A warning appears.
2. Click **Yes** and then **OK** to continue to the Distress message editor.
The position and mobile number of your Mini-C Terminal is automatically inserted at the beginning of the Distress message, together with the data you have entered under Vessel data (if any).
3. Type a subject for the message.

Important

The Subject field is important - some messages may not be received correctly if the subject is missing.

4. Type your message, describing the nature of the Distress.
5. Click **Send**.

Setting up Distress alert

You can temporarily change the settings for your Distress function.

For information on how to use the Distress button to send a Distress alert, see *Sending a Distress Alert (SAILOR 6150 only)* on page 60.

Default settings:

- Distress Alert Nature: Unspecified.
- Distress Alert Land Earth Stations: LES automatically selected by mobile.
(the SAILOR 3027 selects the LES with the best signal).

- Distress Alert Position, Course and Speed: Always use latest position from GPS.

Note

The Distress Alert Nature and the Distress Alert Position, Course and Speed settings are only valid for the current Distress Alert or maximum one hour. Then these settings are returned to the default settings. The entered Distress LESs remain in the system.

To change the Distress alert settings, do as follows:

1. From the menu bar, select **Distress > Distress alert setup**.
2. Click **OK** after reading the warning popup window.

The screenshot shows the 'Distress Alert Setup' dialog box. It has a title bar with a close button. The dialog is divided into several sections:

- Land Earth Stations:** This section contains four dropdown menus for selecting the LES (Land Earth Station) for different regions:
 - Atlantic Ocean Region West: LES automatically selected by mobile
 - Atlantic Ocean Region East: LES automatically selected by mobile
 - Pacific Ocean Region: LES automatically selected by mobile
 - Indian Ocean Region: LES automatically selected by mobile
- Position:** This section contains input fields for Latitude, Longitude, Course, and Speed.
 - Latitude:** Deg. (55), Min. (47), Min/100 (60), N/S (N)
 - Longitude:** Deg. (012), Min. (31), Min/100 (40), W/E (E)
 - Course:** Deg. (117)
 - Speed:** Knots (0)
- Updated at UTC:** This section contains input fields for the hour and minute of the UTC time.
 - Hour: 08
 - Min.: 07
- Nature of Distress:** This section contains a list of radio buttons for selecting the nature of the distress.
 - ☒ Undesignated
 - ☐ Explosion/Fire
 - ☐ Flooding
 - ☐ Collision
 - ☐ Grounding
 - ☐ Listing
 - ☐ Sinking
 - ☐ Disabled & adrift
 - ☐ Abandoning ship
 - ☐ Req. assistance
 - ☐ Piracy
- Always use latest position from GPS:** A checkbox that is currently checked.
- Buttons:** At the bottom right, there are 'OK' and 'Cancel' buttons.

3. From the drop-down list at each ocean region, select the LES to be used for Distress alerts or leave the setting at **LES automatically selected by mobile** (default setting).
4. If necessary, change the position, course and speed.

Note

Do not change the default setting unless you have good reasons to do so. The default setting is “Always use latest position from GPS”. It is normally best to show your current GPS position when sending a Distress Alert.

You may need to change the position, e.g. if the person(s) that need help are no longer on board the ship (man overboard).

5. Select the nature of the Distress.
6. Click **OK**.

Reset alarm/latest Distress info

After sending a Distress alert or receiving an urgent/distress priority EGC or message, you can reset the alarm light and sound in the alarm buttons. At the same time you can see status on Distress alerts and Distress test. Do as follows:

1. Select **Distress > Reset alarm/latest Distress info**.
A popup window shows information on the latest Distress Alert and the latest Distress test.
2. Click **OK**.

The light and sound in the alarm button(s) are switched off.

Testing Distress buttons

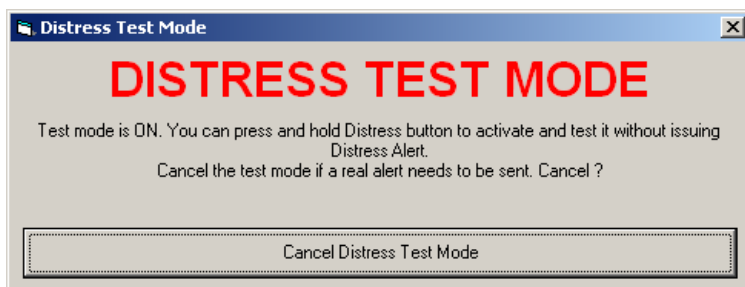
Important

Never test the installation by sending an alert on-air!

If an alert is sent by mistake, inform the relevant authorities immediately.

You can test the Distress button(s) in your system without sending a real Distress alert. Do as follows:

1. Select Distress > Distress test mode.



2. When you see the Distress test mode window shown above, press the connected Distress button(s) as you would in a real Distress situation. The light and buzzer in the Distress buttons should work the same way as in a real Distress situation. For details on the Distress buttons, see *Sending a Distress Alert (SAILOR 6150 only)* on page 60.
3. To clear alarm indications, select **Distress > Reset alarms/latest Distress info**. The button light should go off.
4. Click **Cancel** to exit Distress test mode.

Note

The system automatically exits the test mode after 15 minutes, if you do not Cancel it.

Testing easyMail alarm sound

To test the alarm sound in easyMail, do as follows:

1. Select **Distress > Test easyMail sound**.
2. Click **Start** to hear the sound on your computer.
Your computer will now play the same sound that you will hear when a Distress alert is sent or an urgent/distress priority EGC or message is received.
3. Click **Stop** to stop the sound.
4. When you have finished testing, click **Cancel** or close the window.

Working with messages

Preparing the system

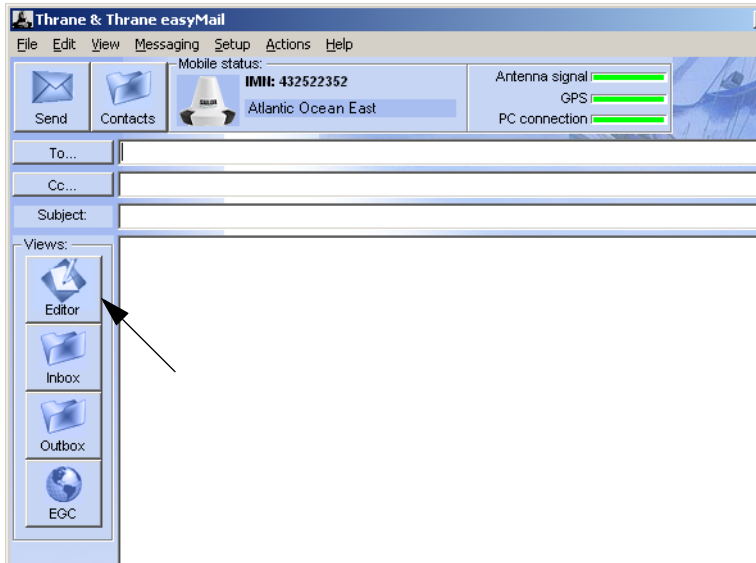
Before you can send a message:

- The recipient of the message must be listed in the Address book. For details, see *Managing the list of Contacts* on page 30.
- The Mini-C Terminal must be logged in to an Ocean Region. Normally the Mini-C Terminal logs in automatically. If it is logged out, see *Logging into and out of the network* on page 38.
- The default ISP must be set.
See *Setting up the default ISP* on page 43.
- Default LESes must be set for all Ocean Regions.
See *Setting up the default LESes* on page 43.
- The mobile number must be configured in the Mini-C Terminal.
This is normally set up during installation. If not, see *Entering the mobile number* on page 50.

Writing a routine priority message

To write a routine priority message, do as follows:

1. If the editor is not already open, select **File > New** or click the **Editor** button to the left (if present).



2. Select **To...** in the top left corner and select the recipient(s) of the message from the Address book.

Alternatively you may type in the recipient manually.

3. In the **Subject** field, type in a subject title for your message.

Important

The Subject field is important - some messages may not be received correctly if the subject is missing.

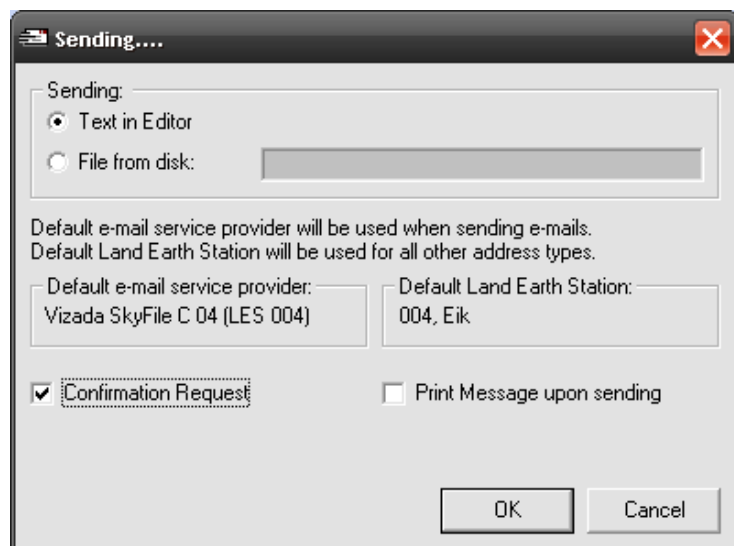
4. If you want to send a data file instead of typing text in the text editor, skip the next step and go directly to step 6.
5. Type your message text in the editor.

For information on how to edit text, see *Editing your message* on page 25.

Note

If you want to save your message without sending it, you can save it as a file by selecting **File > Save**.

- When the message is ready to be sent, click **Send**.



- Select what you want to send.
 - If you want to send a data file, select **File from disk**, browse to the file you want to send and click **Open**.
 - If you want to send the text in the editor, select **Text in editor**.
- Select if you want:
 - Confirmation request
 - Print message upon sending
- Select **OK**.

The message is sent as soon as the network allows it. You can see the status of your message under **View > Outbox**.

Options for writing and sending messages

In the **File** menu, you have the following options:

- **New.** Opens a new message.
- **Open.** Allows you to select a text file to be opened in the editor.
- **Save.** Allows you to save the message for later use.
- **Merge.** Allows you to insert the contents from a text file into your message at the cursor position.
- **Print editor.** Prints the message on a connected printer.
- **Exit.** Closes easyMail.

Editing your message

When writing a message you have some editing options, described in the next subsections.

To cut, copy and paste

In the **Edit** menu you can select **Cut**, **Copy** and **Paste** as in a normal editor.

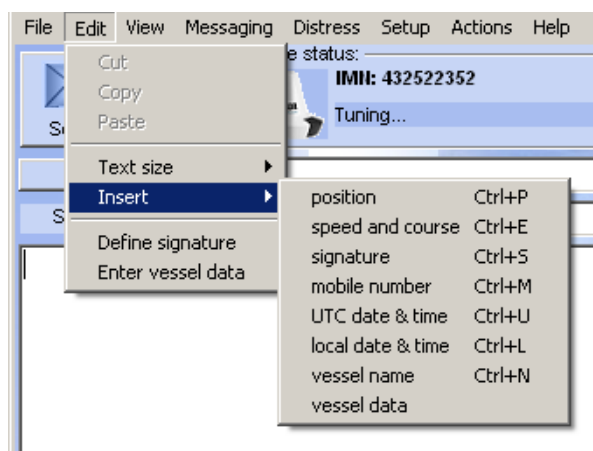
To change text size

To change the text size, press Ctrl+F1 (smaller) and Ctrl+F2 (larger), or select **Edit > Text size > + Ctrl+F2** or **- Ctrl+F1**.

To insert information automatically

To insert information such as position and vessel data in your message, do as follows:

1. Select **Edit > Insert**.



2. Select the information you want to insert.

Note

Signature and vessel data must first be defined. See the next section.

The information is now inserted in your message as part of the message text.

To enter signature and vessel data

You can enter a signature and your vessel data for later automatic insertion in your messages (see previous section). To define your signature, do as follows:

1. Select **Edit > Define signature**.
2. Type in your signature and click **OK**.

The signature is now saved for later use with Edit > Insert.

To enter your vessel data, do as follows:

1. Select **Edit > Enter vessel data**.



Vessel data

Here you can enter a description of the vessel. The vessel name can be easily inserted in messages and the description will also be automatically inserted in distress priority messages.

Name of vessel:

Vessel type:

Flag:

Destination

Cargo:

Comment:

OK Cancel

2. Fill in the vessel data for your ship and click **OK**.

Using default messages

You can write a default message that you can recall and send by pressing one of the F-keys F1 to F8.

Creating a default message

To **create** a default message, do as follows:

1. Open the message editor.
2. Type in your message.
3. Select **Messaging > Default messages**.
4. Select the F-key you want to use for the message.
5. Type a name for the message.
6. Click **Save and close**.

Sending a default message

To **recall and send** the message, fill in the message recipient and a subject in the editor **To...** field and press the F-key you selected above.

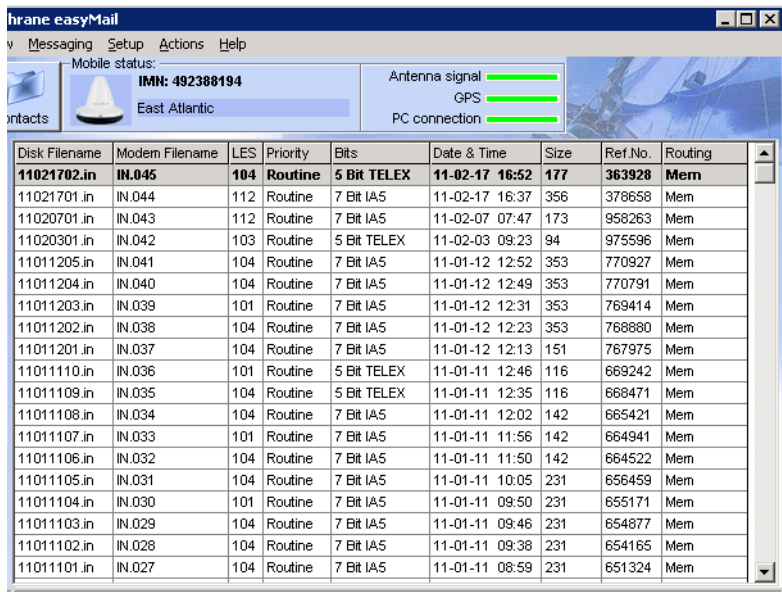
Important

The Subject field is important - some messages may not be received correctly if the subject is missing.

Viewing messages in the Inbox

To view the messages in the Inbox, do as follows:

1. Select **View > Inbox**.



Disk Filename	Modem Filename	LES	Priority	Bits	Date & Time	Size	Ref.No.	Routing
11021702.in	IN.045	104	Routine	5 Bit TELEX	11-02-17 16:52	177	363928	Mem
11021701.in	IN.044	112	Routine	7 Bit IAS	11-02-17 16:37	356	378658	Mem
11020701.in	IN.043	112	Routine	7 Bit IAS	11-02-07 07:47	173	958263	Mem
11020301.in	IN.042	103	Routine	5 Bit TELEX	11-02-03 09:23	94	975596	Mem
11011205.in	IN.041	104	Routine	7 Bit IAS	11-01-12 12:52	353	770927	Mem
11011204.in	IN.040	104	Routine	7 Bit IAS	11-01-12 12:49	353	770791	Mem
11011203.in	IN.039	101	Routine	7 Bit IAS	11-01-12 12:31	353	769414	Mem
11011202.in	IN.038	104	Routine	7 Bit IAS	11-01-12 12:23	353	768880	Mem
11011201.in	IN.037	104	Routine	7 Bit IAS	11-01-12 12:13	151	767975	Mem
11011110.in	IN.036	101	Routine	5 Bit TELEX	11-01-11 12:46	116	668242	Mem
11011109.in	IN.035	104	Routine	5 Bit TELEX	11-01-11 12:35	116	668471	Mem
11011108.in	IN.034	104	Routine	7 Bit IAS	11-01-11 12:02	142	665421	Mem
11011107.in	IN.033	101	Routine	7 Bit IAS	11-01-11 11:56	142	664941	Mem
11011106.in	IN.032	104	Routine	7 Bit IAS	11-01-11 11:50	142	664522	Mem
11011105.in	IN.031	104	Routine	7 Bit IAS	11-01-11 10:05	231	656459	Mem
11011104.in	IN.030	101	Routine	7 Bit IAS	11-01-11 09:50	231	655171	Mem
11011103.in	IN.029	104	Routine	7 Bit IAS	11-01-11 09:46	231	654877	Mem
11011102.in	IN.028	104	Routine	7 Bit IAS	11-01-11 09:38	231	654165	Mem
11011101.in	IN.027	104	Routine	7 Bit IAS	11-01-11 08:59	231	651324	Mem

2. Double-click the message you want to read.
From within the message you have the following options:
 - **Print.** The message is printed on the connected printer.
 - **Save.** You can browse to a location and save the message (.txt file)
 - **Forward.** The message text is inserted into the editor so you can forward it to a new recipient.
 - **Wrap text.** When selected, the text is wrapped to fit the window size.
3. Click **OK** or **Cancel** to close the message.
4. To delete one or more messages, right-click the message(s) and select **Delete message)**

Viewing sent messages (Outbox)

After writing a message and selecting Send, you can see the message and the status of the message in the Outbox

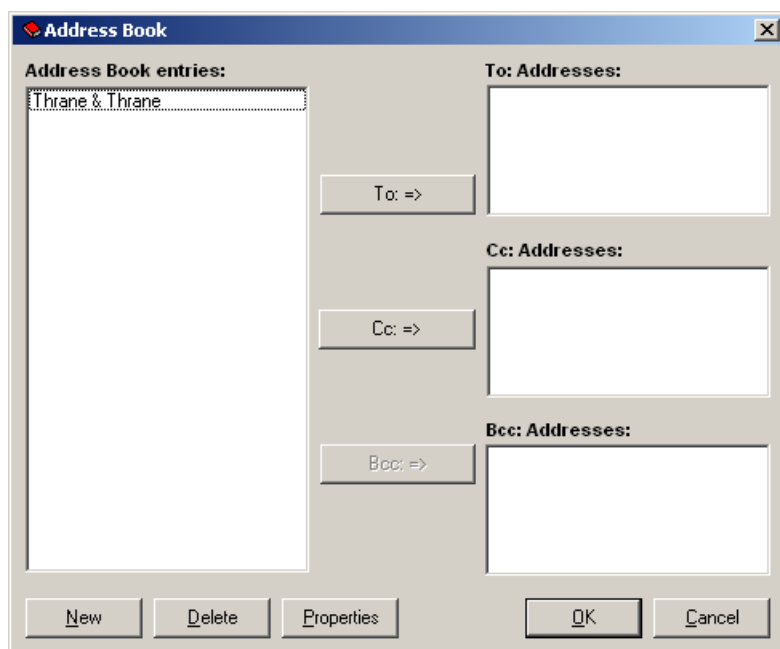
To view messages in the Outbox, select **View > Outbox**.

Managing the list of Contacts

To manage your list of contacts, click **Contacts/Address book**.



or select **Messaging >**

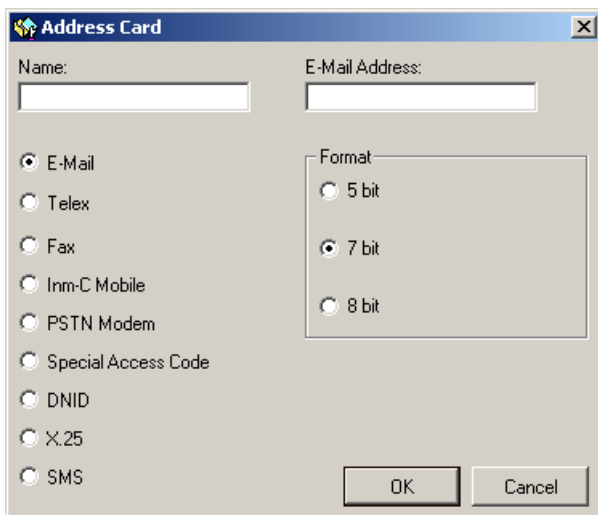


To see details for a contact, select it and click **Properties**.

To add a new contact

Do as follows:

1. In the **Address book**, select **New** at the bottom of the page.



2. Type in the name of your contact.
3. Select the address type below the name.
4. Type in the details for your contact. The format of the address/number depends on the selected address type. See the table on the next page.
5. Select **OK**.

The new contact is now listed in the Address book.

Message formats and presentation:

Type	Format of number	Example	Presentation
E-mail	Standard e-mail address	info@thrane.com	5, 7 or 8 bit
Telex	Country code + subscriber no.	0045 99999999	5 or 7 bit
Fax	Country code + subscriber no.	0045 99999999	5, 7 or 8 bit
Inmarsat-C mobile	Mobile number	492388999	5, 7 or 8 bit
PSTN modem	Country code + subscriber no.	0045 99999999	5, 7 or 8 bit
Special access code	Pre-defined codes: <ul style="list-style-type: none">• 32 - Medical Advice• 33 - Technical Assistance• 38 - Medical Assistance• 39 - Maritime Assistance• 41 - Meteorological Reports• 42 - Navigational Hazards and Warnings• 43 - Ship Position and Sail Plan Reports	32	5, 7 or 8 bit
X.25	DNIC (country code) + subscriber no.	2380 99999999	5, 7 or 8 bit

To edit a contact

Do as follows:

1. In the **Address book**, select the contact.
2. Select **Properties**.
3. Edit the details.
See the previous section for information on the contact details.
4. Select **OK**.

To delete a contact

Do as follows:

1. In the **Address book**, select the contact.
2. Select **Delete**.
3. Select **Yes** to confirm.
4. Select **OK** to leave the Address book.

Position reporting

For general information on the position reporting service, see *Position reporting* on page 7.

Note

To be able to use the position reporting feature, a DNID must be downloaded and enabled in the Mini-C Terminal. See *Setting up ENIDs* on page 45.

To access the PU reporting setup page, Select:
Messaging > Position reporting.

The PU (Position Unreserved) reporting setup window shows the position reporting programs for the Mini-C Terminal. For each program you can see the status and whether it is a local or remote program.

The screenshot shows the 'PU Reporting Setup' window with four program configurations:

Program	Type	Status	Options
Program 1	PU-Local	Stopped	Start, Delete
Program 2	PU-Remote	Started	Status
Program 3	Closed	Status:	Status, New
Program 4	Closed	Status:	Status, New

Each program configuration includes a table for location data:

Location	Ocean	LES	DNID	Mem.No.
West:				
East:	104	8048	10	
Pacific:				
Indian:				

Program 2 and Program 4 have additional data:

Location	Ocean	LES	DNID	Mem.No.
West:				
East:				
Pacific:	204	8048	10	
Indian:	304	8048	10	


An 'Ok' button is located at the bottom right of the window.

To start a local position reporting program

Note

Only local position reporting programs can be managed locally. You can see the remotely configured programs as well but you cannot change them.

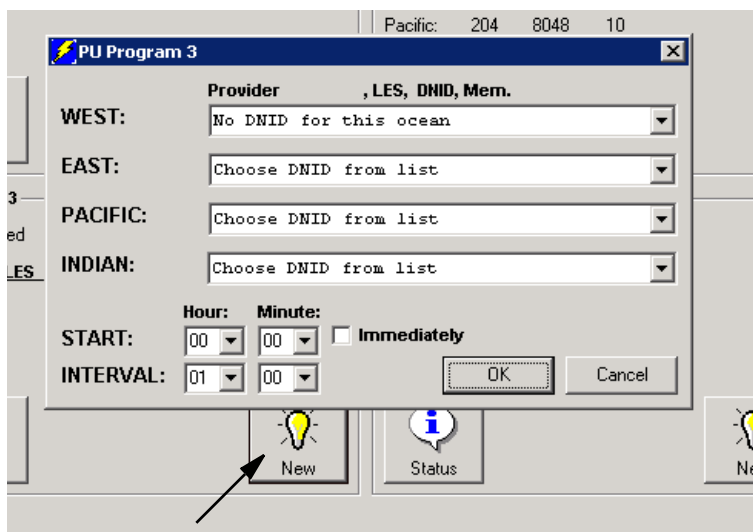
To start a program that is already defined, do as follows:

1. From the PU Reporting Setup page, click the **Start** button at the program you want to start. The Start button becomes a Stop button . The Mini-C Terminal will now start sending position reports from the defined start time with the defined intervals until you stop it with the **Stop** button.
2. Click **OK**.

To define a new position reporting program

To define a new local program, do as follows:

1. From the **PU Reporting Setup page**, select **New**.



2. Select the DNID information (provider, LES, DNID and member number) for each ocean region.
3. Select the time to start the position reporting or select Immediately.
4. Select the interval between the position reports.
5. Click **OK**.
The program is now set up and you can start and stop it with the buttons as described in the previous section.
6. Click **OK** again to exit the PU Reporting Setup page.

Receiving EGCs

Viewing incoming EGCs

You can receive various types of EGCs in easyMail. For details about how to set up which EGCs to receive, see *Setting up reception of EGCs* on page 44.

Note

To be able to receive FleetNET EGCs, an ENID must be downloaded and enabled in the Mini-C Terminal. See *Setting up ENIDs* on page 45.

Note

When the EGC Inbox is full, the oldest EGCs are automatically deleted.

To view EGCs, do as follows:

1. Select **View > EGC** from the main menu.

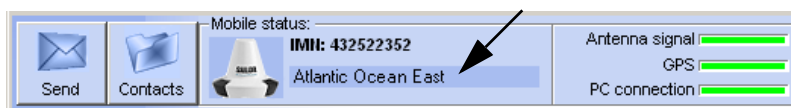
Disk Filename	Modem Filename	LES	Service	Priority	Bits	Date & Time	Size	Ref.No.	Routing
11032909.egc	EGC.467	121	MET.NAV WarningForecast	Safety	7 Bit IA5	11-03-28 04:33	416	21430	Mem
11032908.egc	EGC.466	112	MET.NAV WarningForecast	Safety	7 Bit IA5	11-03-28 21:39	5670	14567	Mem
11032907.egc	EGC.465	112	MET.NAV WarningForecast	Safety	7 Bit IA5	11-03-28 21:32	2854	14567	Mem
11032906.egc	EGC.464	121	MET.NAV WarningForecast	Safety	7 Bit IA5	11-03-28 21:03	5606	21421	Mem
11032905.egc	EGC.463	102	MET.NAV WarningForecast	Safety	7 Bit IA5	11-03-28 17:36	251	8572	Mem
11032904.egc	EGC.462	102	MET.NAV WarningForecast	Safety	7 Bit IA5	11-03-28 17:36	364	8571	Mem
11032903.egc	EGC.461	102	MET.NAV WarningForecast	Safety	7 Bit IA5	11-03-28 17:36	2274	8569	Mem
11032902.egc	EGC.460	102	MET.NAV WarningForecast	Safety	7 Bit IA5	11-03-28 17:35	695	8570	Mem
11032901.egc	EGC.459	102	MET.NAV WarningForecast	Safety	7 Bit IA5	11-03-28 17:33	1318	8569	Mem
11032820.egc	EGC.458	112	MET.NAV WarningForecast	Safety	7 Bit IA5	11-03-28 09:36	4301	14515	Mem
11032819.egc	EGC.457	112	MET.NAV WarningForecast	Safety	7 Bit IA5	11-03-28 09:30	2598	14515	Mem
11032818.egc	EGC.456	121	MET.NAV WarningForecast	Safety	7 Bit IA5	11-03-28 09:03	5302	21409	Mem
11032817.egc	EGC.455	112	MET.NAV WarningForecast	Safety	7 Bit IA5	11-03-27 21:32	4175	14463	Mem
11032816.egc	EGC.454	121	MET.NAV WarningForecast	Safety	7 Bit IA5	11-03-27 21:08	5051	21375	Mem
11032815.egc	EGC.453	112	MET.NAV WarningForecast	Safety	7 Bit IA5	11-03-27 09:31	3510	14411	Mem
11032814.egc	EGC.452	121	MET.NAV WarningForecast	Safety	7 Bit IA5	11-03-27 09:08	4138	21366	Mem
11032813.egc	EGC.451	144	System Call	Routine	7 Bit IA5	11-03-27 04:23	1170	346	Mem
11032812.egc	EGC.450	144	System Call	Routine	7 Bit IA5	11-03-27 04:01	1170	346	Mem

2011-03-29 05:54:48: INFO 91: Receiving message successful: File EGC.467 Message no. 21430 Priority 1 LES id 121 EGC service 31

2. Double-click an EGC to see the contents.
From within the EGC you have the following options:
 - **Print.** The EGC is printed on the connected printer.
 - **Save.** You can browse to a location and save the EGC (.txt file)
 - **Forward.** The EGC text is inserted into the message editor so you can forward it to a new recipient.
 - **Wrap text.** When selected, the text is wrapped to fit the window size.
3. Click **OK** or **Cancel** to close the EGC.
4. To delete one or more EGCs, right-click the EGC(s) and select **Delete EGC**.

Network status and settings

The Mobile status field at the top of the page shows the status of the network connection. When the Mini-C Terminal is logged in to the network, this field shows the ocean region to which the Mini-C Terminal is logged in.



Logging into and out of the network

To log into the Inmarsat C network, select **Actions > Login** and select the Ocean region you are logging into.

If you want to use the preferred ocean configured in the Mini-C Terminal, or simply the region with the best signal, use **Scan preferred ocean** instead (see the next section).

To log out of the network, select **Actions > Logout**.

Scanning the network

If you want the system to find the best signal, select **Actions > Preferred ocean > Scan preferred ocean**. The system will then scan for the best signal and log in.

If an ocean region is selected under Set preferred ocean, the system will scan the selected ocean first.

Setting the preferred ocean region

If you want the system to generally use a specific ocean region, select **Actions > Preferred ocean > Set preferred ocean** and select the ocean region you want to use. If you select **None**, the scanning process will use the ocean region with the best signal.

The selected ocean region is used when you select **Actions > Preferred ocean > Scan**.

Link test

Note

To test basic system connectivity, we recommend that you send a short message to yourself instead of using the link test. For details on how to send a message, see *Writing a routine priority message* on page 23.

If you still want to make a link test, do as follows:

1. In the easyMail application, click **Actions > Link test**.
After the Link test is requested, the NCS assigns a LES for performing the Link test. This can take a while.
2. When the **Linktest** window appears, click **Execute** to start the test.

Note

Because the link test has low priority in the network it can take a long time for the system to complete the link test, and during this time the system has limited functionality.


A popup window informs you that the test has started. When the test has ended another popup window informs you that the test was completed successfully or that it failed.

Stop Transmission

If you want the system to immediately stop transmitting, select **Actions > Abort transmission**.

The current protocol is then cleared, and any ongoing transmission is stopped.

Viewing system details

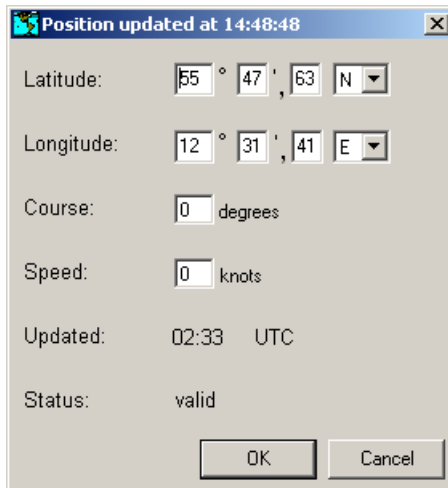
To see information on easyMail and the Mini-C Terminal, click  or select **Help > System info**.



Viewing or changing position information

To view or change your current position information, course and speed, do as follows:

1. select **View > Position info.**



Position updated at 14:48:48

Latitude: 55 ° 47 ' 63 N

Longitude: 12 ° 31 ' 41 E

Course: 0 degrees

Speed: 0 knots

Updated: 02:33 UTC

Status: valid

OK Cancel

2. If there is no synchronization with the positioning system, you can enter a manual position, course and speed.
3. Select **OK**.

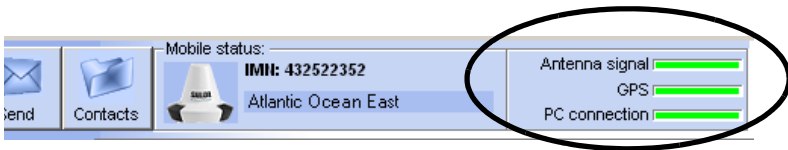
The manually entered position data will be used by the system until the automatic position data is available again.

Viewing status

To see the status of the Mini-C Terminal, select **View > Transceiver status**, or click the **Antenna signal** bar in the connections status field at the top of the page.

To see the GPS status, select **View > GPS status**, or click the **GPS** bar in the connections status field at the top of the page.

Connection status field



Viewing the Info log

To see the information log, select **View > Info log**.

The information log shows the most recent events registered in your Mini-C System.

Setting up the default ISP

To set up a default ISP, do as follows:

1. Select **Setup > Default ISP**.
2. Select the default ISP from the list.
3. Select **Set Default LESs to ISP settings** if you want to use the default ISP with the Default LESes.
4. Click **OK**.

Setting up the default LESes

To set up the default LESes, do as follows:

1. Select **Setup > Default LES**.
2. Select the default LES for each ocean region.
3. Click **OK**.

Setting up reception of EGCs

For general information on EGCs, see *Enhanced Group Calling (EGC)* on page 6.

To set up reception of EGCs, do as follows:

1. Select **Setup > EGCs**.

EGC Setup

☐ Additional NAVAREA(s) / METAREA(s) None None None None ☐ System Messages ☒ SafetyNET

[Coastal Warning Areas settings]

Coastal Warning Areas [A..Z]:

☐ Navigational Warnings ☐ Meteorological Forecasts ☐ SATNAV
☐ Meteorological Warnings ☐ Pilot Service ☐ Other Navaid
☐ Ice Reports ☐ LORAN ☐ Additional Navigational Warnings
☐ Search And Rescue

[Fixed Positions]

	Latitude:		Longitude:	
	Deg.	North/South	Deg.	East/West
Fixed Pos. 1:	<input type="text"/>	<input type="text"/>	<input type="text"/>	<input type="text"/>
Fixed Pos. 2:	<input type="text"/>	<input type="text"/>	<input type="text"/>	<input type="text"/>
Fixed Pos. 3:	<input type="text"/>	<input type="text"/>	<input type="text"/>	<input type="text"/>
Fixed Pos. 4:	<input type="text"/>	<input type="text"/>	<input type="text"/>	<input type="text"/>
Fixed Pos. 5:	<input type="text"/>	<input type="text"/>	<input type="text"/>	<input type="text"/>

OK Cancel

2. To set up the additional areas from which you want to receive meteorological or navigational EGCs, select **Additional NAVAREA(s) /METAREA(s)**.

Then select the numbers of the areas from which you want to receive EGCs, and select **OK**.

Note

You always receive EGCs from the area in which you are located. The areas selected here are additional areas.

3. Select whether you want to receive **System Messages** or **SafetyNET** messages or both.
4. To change the Coastal Warning Areas, type in the new areas under **Coastal Warning Areas [A..Z]**.
5. Select the types of EGC service you want to receive.
6. If you want to receive EGCs at specific positions on your route, select **Fixed positions** and fill in the position information for each point on the route.
7. Click **OK**.

Setting up ENIDs

ENIDs (EGC Network IDentification) are used for identifying the Mini-C Terminal on the network in order for the terminal to receive FleetNET EGCs.

ENIDs must be set up with your LES operator and downloaded to your Mini-C Terminal before you can use them.

To set up the ENIDs, do as follows:

1. Select **Setup > ENIDs**.
The ENIDs are listed with provider, ENID and status.
2. Select the ENIDs you want to enable.
3. Click **OK**.

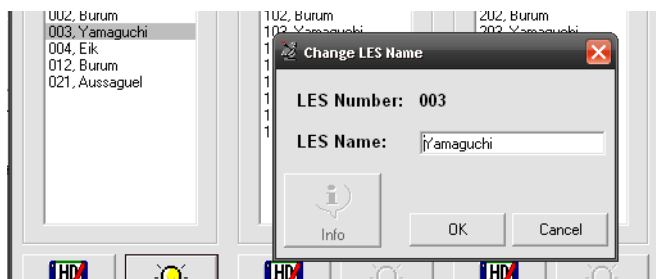
Setting up the Land Earth Stations (LES)

To view or edit the list of Land Earth Stations for each ocean region, do as follows:

1. Select **Setup > Land Earth Stations (LES)**.



2. Select a LES and click **Edit**.



3. If necessary, type in the new name of the LES.
4. Click **OK**.
5. To use default LES numbers and names for an ocean region, click the **Default** button and click **Yes**.
6. Click **OK** to exit.

List of currently supported LESs

The table below shows the LESs supported by the service providers at the time of writing. Note that the list is dynamic, so it may not be completely up to date.

Service Provider	LES no. AOR-W	LES no. AOR-E	LES no. POR	LES no. IOR
CTTC China	-	-	211	311
KDDI SatMail-C Japan	003	103	203	303
Morsviazspudnik Russia	-	117	-	317
OTE Greece	-	120	-	305
SingTel Mail65 (SAC65)	002	102	210	328
SingTel Mail65 (SAC6500)	002	102	210	328
SingTel Mail65 (SAC6599)	002	102	210	328
Stratos Global C-email 02	002	102	202	302
Stratos Global C-email 12	012	112	212	312
Telemar X.25	004	104	204	304
Vizada SkyFile C 01	001	101	201	301
Vizada SkyFile C 04	004	104	204	304
Vizada SkyFile C 21	021	121	221	321

Setting up the Inmarsat Service Providers (ISP)

Note

Do not change these settings unless you know the exact formats to enter.

The Inmarsat Service Providers are already set up when you receive your system. However, if an Inmarsat Service Provider e.g. changes the format for email, you can change these settings to match the new format.

To set up the Inmarsat Service Providers in the Mini-C Terminal, do as follows:

1. Select **Setup > Inmarsat Service Providers (ISP)**.

Inmarsat Service Providers

New Provider Delete Provider Load Default

Provider name: West: East: Pacific: Indian:

CTTC China Add 211 311

Service Providers:

- CTTC China
- KDDI SatMail-C Japan
- Morsviazputnik Russia
- OTE Greece
- SingTel Mail65 (SAC65)
- SingTel Mail65 (SAC6500)
- SingTel Mail65 (SAC6599)
- Stratos Global C-email 02
- Stratos Global C-email 12
- Telemar X25
- Vizada SkyFile C 01
- Vizada SkyFile C 04
- Vizada SkyFile C 21

To: TO:

Cc: CC:

Bcc:

Subject: SUBJECT:

Message Prefix: STX:

Address Type: SAC

Address: EMAIL

Delimiter: ;

SMS prefix: Postfix:

SMS SAC:

OK Cancel

2. To edit the information for a provider, select the provider from the list and fill in the new information as specified from the provider.
3. Click **OK**.

To add a new provider

To add a new provider to the list, do as follows:

1. In the Inmarsat service providers window, click **New provider**.

Inmarsat Service Providers

New Provider Delete Provider Load Default

Provider name: West: East: Pacific: Indian:

MyProvider Add

Service Providers:

- CTTC China
- KDDI SatMail-C Japan
- Morsvazputnik Russia
- OTE Greece
- SingTel Mail65 (SAC65)
- SingTel Mail65 (SAC6500)
- SingTel Mail65 (SAC6599)
- Stratos Global C-email 02
- Stratos Global C-email 12
- Telemar X25
- Vizada SkyFile C 01
- Vizada SkyFile C 04
- Vizada SkyFile C 21

To: Cc: Bcc: Subject: Message Prefix: Address Type: Address: Delimiter: SMS prefix: Postfix: SMS SAC:

OK Cancel

2. Type the name of the provider in the top left corner and click **Add**.
The new provider is now added to the list, but without any information.
3. Fill in the information for the provider.
4. Click **OK**.

Entering the mobile number

Before you can use the Mini-C Terminal on the Inmarsat C network you must configure the mobile number from your service provider in the Mini-C Terminal.

To enter the mobile number, do as follows:

1. Select **Setup > Mobile number (IMN)**.
2. Type in the mobile number from your service provider.
3. Click **OK**.

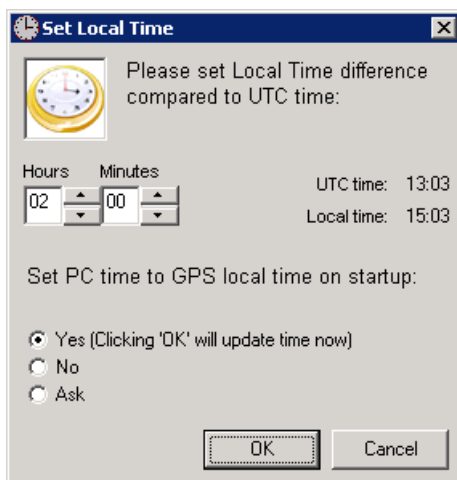
The number is now stored in the Mini-C Terminal and can be used to access the Mini-C Terminal on the Inmarsat C network.

Setting the local time

The Mini-C Terminal gets the UTC time from the GPS receiver. You can convert this time to local time and set the time on your computer accordingly.

Do as follows:

1. Select **Setup > Local time zone/PC time**.



2. Use the up/down arrows to set the time difference between your local time and UTC time.
3. At the bottom of the window, select one of the following:
 - **Yes.** The PC time is automatically updated at startup
 - **No.** The PC time will not be updated.
 - **Ask.** You will be asked at startup whether you want to update the PC time or not.
4. Click **OK**.

Setting up password protection

You can add password protection to three different actions: Transmission, configuration and remote configuration.

To add password protection, do as follows:

1. Select **Setup > Passwords**.
2. Select the password you want to add or change.
3. Type in the old password (leave empty if there was no password protection).
4. Type in the new password under **New password** and again under **Confirm password**.
5. Click **OK** and close easyMail.

With the password protection, easyMail will ask for a password when a person tries to access the password protected areas (transmit a message, configure the system or configure the system remotely).

To remove the password, repeat the above procedure and leave the fields with the new password empty.

Setting the language

To change the language in easyMail, do as follows:

1. Select **Setup > Language**.
2. Select the language you want in easyMail.
3. Select at the bottom whether you want to show the language selection at startup.
4. Click **OK**.

Setting up PC communication with the Mini-C Terminal

To connect a computer to the system you must use a THRANE 6194 Terminal Control Unit. You can connect the computer to the LAN interface or the RS-232 interface on the THRANE 6194.

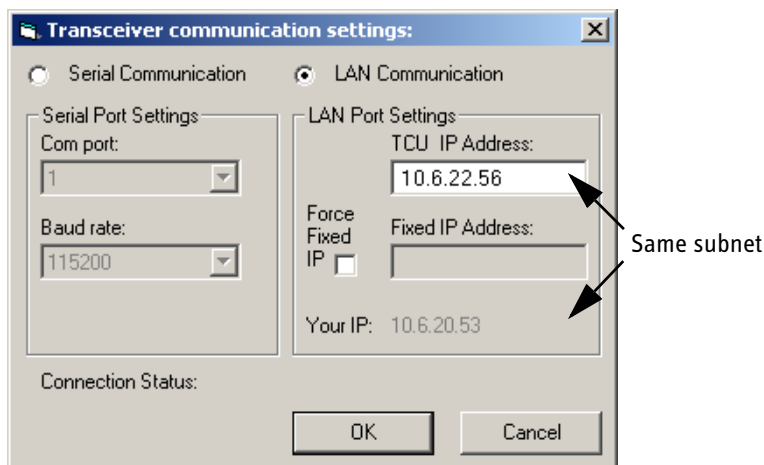
Note

The Communication setup is not accessible when the computer has established a connection with the Mini-C Terminal.

To set up LAN communication

To set up easyMail for LAN communication with the THRANE 6194 and thereby the Mini-C Terminal, do as follows:

1. Select **Setup > Communication setup**.
2. Select **LAN communication**.



3. Type in the **IP address** of the THRANE 6194 Terminal Control Unit (TCU).
You can find the IP address in two ways:

- Using the SNMP upload program, described in *Updating software* on page 63.
- By pressing the Temporary fixed IP address button on the THRANE 6194. The IP address of the THRANE 6194 is temporarily set to 169.254.100.100.

Your IP: Shows the IP address of your PC. **Make sure your PC is on the same subnet as the TCU!** This means the two first sections of the IP address (10.6. in the example picture above) must be the same on the TCU as on your PC.

4. If you want to set the THRANE 6194 to a fixed IP address for your next easyMail session, select **Force fixed IP** and type in the IP address you want to use.

Important

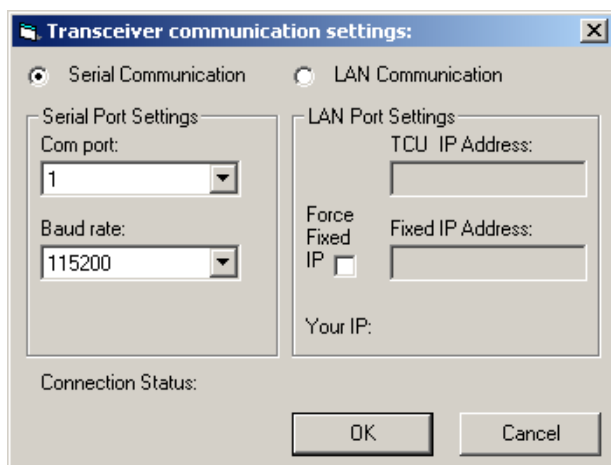
Before clicking OK, make sure the IP address of your PC is on the same subnet as the new TCU IP address.

5. Click **OK**.
easyMail now tries to establish a connection to the THRANE 6194 and thereby the Mini-C Terminal. When the LAN connection is established the PC connection bar at the top of the easyMail window turns green.

To set up RS-232 communication

To set up easyMail for RS-232 communication with the THRANE 6194 and thereby the Mini-C Terminal, do as follows:

1. Select **Setup > Communication setup**.



2. Select **Serial communication**.
3. Select the **COM port** you are using on your computer and the **Baud rate** of the THRANE 6194 (default is 115200).
4. Click **OK**.

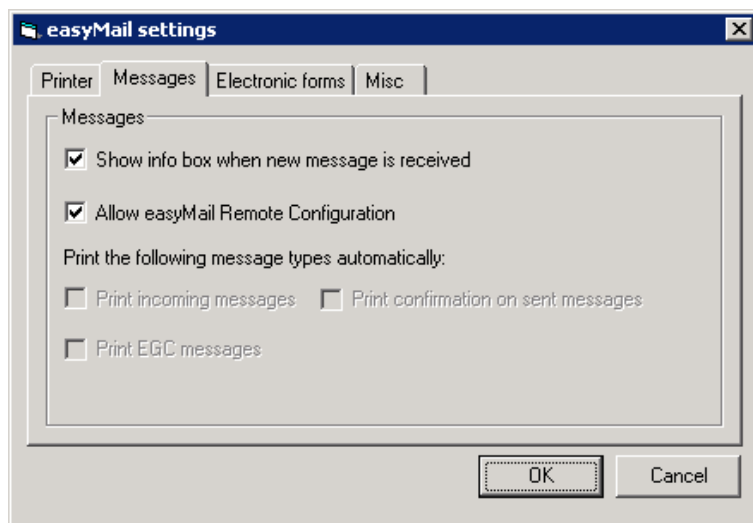
easyMail now tries to establish a connection to the THRANE 6194 and thereby the Mini-C Terminal. When the RS-232 connection is established the PC connection bar at the top of the easyMail window turns green.

Setting up easyMail

To change message setup

You can set up some general settings for messages in the Messages tab. Do as follows:

1. Select **Setup > Settings**.
2. Select the **Messages** tab.



3. If you want to get an info box when a new message has arrived, select **Show info box when new message is received**.
4. If you want to allow configuration of easyMail from a remote location, select **Allow easyMail Remote Configuration**.
Selecting this option enables an authorised remote user to configure certain parts of easyMail using a special kind of message sent to your Mini-C System.
5. If you have a printer connected, select the message types you want to print automatically (if any).

To use electronic forms

Some users have a need for a specific layout, e.g. for fishery catch reporting. The files for this layout must be downloaded to the system before selecting the formats on this page.

Miscellaneous settings

In Harbour Button

Select **Setup > Settings > Misc > In Harbour Button** to select whether or not you want to show an In Harbour Button in easyMail. The In Harbour button is used for setting a longer reporting interval when the ship is in harbour.

Reset HotList

The HotList is a list of the last used commands on the Mini-C Terminal. To see the list, press F12.

To reset the HotList, select **Setup > Settings > Misc > Reset HotList**.

Using Distress and SSA buttons

This chapter describes how to use the 6108 Non-SOLAS Alarm Panel and the SSA buttons. It has the following sections:

- *Sending a Distress Alert (SAILOR 6150 only)*
- *Using SSA buttons (SAILOR 6120 only)*

Sending a Distress Alert (SAILOR 6150 only)

Important

Only send a Distress Alert if you are in immediate danger!
The Distress Alert can be compared to a MAYDAY call.

With the SAILOR 6150 system you may have a SAILOR 6108 Non-SOLAS Alarm Panel installed.

To send a Distress Alert, do as follows:

1. Open the cover for the Distress button.
2. Press and hold the button until the light is steady and the buzzer stops (more than 5 seconds).

During this time the button light flashes and the buzzer sounds. After 5 seconds the red light goes steady on and the buzzer is silent.



When the Distress alert is acknowledged, the button light goes off shortly every 15 seconds.

You must have either a Message Terminal or a computer with easyMail in a SAILOR 6150 system. Use the Message Terminal or easyMail to see the status of the Distress and to follow up. See *Distress functions (only SAILOR 6150)* on page 17.

Important

The MRCC normally sends a message to the alerting unit to gather more information about the situation.

If possible, respond to such messages with a Distress message sent to the same LES that was used for the Distress Alert.

For information on how to send a Distress message, see *Writing a Distress priority message (only SAILOR 6150)* on page 17.

The MRCC may also send Distress EGCs to other ships in the area to request assistance (typically as Distress Relay or SAR Coordination request).

See also *Setting up Distress alert* on page 17.

Clearing distress indications

Note

This function will only turn off the visual and audible indications on board. It will not cancel the transmission of the Distress Alert.

If you want to turn off all distress indications while a Distress Alert is still active, you can use one of the following:

- **Message Terminal:** Select **Distress > Status > Clear distress indications**.
- **easyMail:** Select **Distress > Reset alarm/Latest Distress info**.

Using SSA buttons (SAILOR 6120 only)

The recipient(s) of the Ship Security Alert must be configured in the Mini-C Terminal according to the Flag Administration under which the vessel is sailing. The recipients can be e-mail addresses, phone numbers (SMS), fax numbers or telex numbers.

Install the SSA buttons and configure the Mini-C Terminal as described in *THRANE 6194 Terminal Control Unit, Installation and user manual* [3].

Sending a covert Ship Security Alert (SSA)

To send a covert SSA, do as follows:

1. Open the cover for the red covert alert button.
2. Press the button.
 - **Instant activation button:** When pressed, an alert is sent immediately to the configured SSA recipient(s).
 - **Standard activation buttons:** When pressed, an alert is sent after 30 – 33 seconds. If released (pressed again) within the 30 seconds, the alert is not sent. If the alert button is not released SSA Messages will be retransmitted every 30 minutes, until the button is released.



Using the green or yellow test button

The green or yellow button is a test button with a lamp. The button has momentary action (closed only as long as the button is pressed and held). When the system is operational¹, the test button is permanently lit. When the test button is pressed the light switches off and the covert alert buttons can be pressed without sending any alerts. If a covert alert button is pressed for 30 – 33 seconds during test, an SSA Test Message is sent to all recipients configured to receive test messages.

-
1. “Operational” means the following criteria are met: GPS fix obtained, logged in, recipient(s) of covert alert configured, all SSA buttons connected correctly.

Troubleshooting

This chapter gives guidelines for troubleshooting and provides an overview of the different means of status signalling. It has the following sections:

- *Getting support*
- *Updating software*
- *Troubleshooting guide*

Getting support

If this manual does not provide the remedies to solve your problem, you may want to contact your Airtime Provider or your local distributor.

To help with the troubleshooting, please generate a diagnostic report as described in the next page, and enclose the diagnostic report file when asking for support.

Airtime support

If you need assistance from your Airtime Provider, check your Airtime subscription documents for a contact number to call.

System support

If you need assistance with problems caused by one of your system units, please call a distributor in your area.

A list of certified partners and distributors is available on Thrane & Thrane's web site: www.thrane.com. Select **Maritime** and select **Where to buy** from the top menu bar.

Updating software

Required tools and files

Before you can update the software you must get a download tool and the new software for the Mini-C Terminal.

Do as follows:

1. Open your browser and log into the Thrane &Thrane Extranet.
2. Find and download the zip file containing the Thrane &Thrane **SNMP upload** application.
3. Extract the files to **C:\Thrane** (create the folder if it is not already there). Remember to select **Use folder names**.
4. On the Extranet, find the new software image for the Mini-C Terminal (.tiif file).
5. Download the .tiif file to the folder **C:\Thrane\TFTP-Root** (this folder should be created automatically when you extract the files from the zip file).

Updating the Mini-C Terminal software

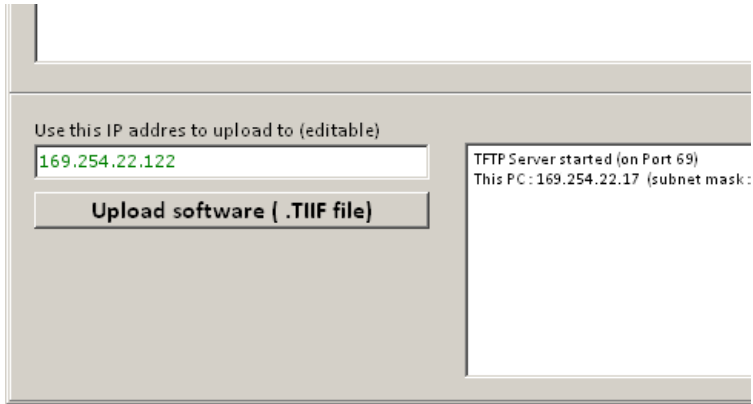
Get the download tool and the new software as described in the previous section. Then do as follows:

1. Connect the Mini-C Terminal to the THRANE 6194 Terminal Control Unit and connect your computer to the LAN port on the THRANE 6194.
2. Start the SNMP upload tool (.exe file) placed in C:\Thrane\.
3. The application searches for units connected to the local network. When a unit is found, it is listed with IP address, description, serial number and software version.

Note

It may take some time for the Mini-C Terminal to appear in the list.

4. When the Mini-C Terminal appears in the list you can check the current software version in the **sw-version** column. If there are more than one Mini-C Terminal you can recognize your unit by the serial number.
5. Click on your Mini-C Terminal to select it.
6. When the IP address of your Mini-C Terminal appears in the small field in the bottom left corner, click the button **Upload software (.TIIF file)**.



7. Browse to the .tiif file in C:\Thrane\TFTP-Root\.
8. Select the file and click **Open**.

The software is now updated and the Mini-C Terminal automatically restarts with the new software. You can use the SNMP upload application again to check the software version as in step 4 above.

Troubleshooting guide

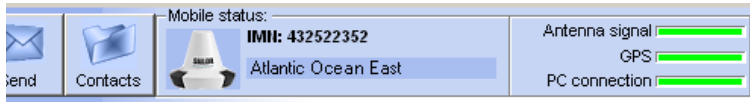
The below table provides information on some of the problems that might occur, including possible causes and remedies to solve the problems.

Problem	Possible cause	Remedy
SAILOR 6150 only: The Message Terminal cannot switch off.	Software error	Push and hold the Power button for 10 seconds, or reboot via the power cable.
There is no signal or weak signal from the satellite.	The view to the satellite is blocked, or there is a hardware problem.	Make sure the SAILOR 3027 has a clear view in all directions. See the installation manual for details. If the view is not blocked, check the error log. If the problem persists, contact your local distributor.
SAILOR 6150 only: No connection between SAILOR 6006 and SAILOR 3027	The LAN cable between the THRANE 6164 and the SAILOR 6006 or the CAN cable between the SAILOR 3027 and the THRANE 6194 is damaged or is not properly connected.	Make sure the cables are properly connected and that the cables and connectors are not damaged.
No connection between easyMail and SAILOR 3027	The PC connection to the SAILOR 3027 is not set up properly.	For information on how to set up the PC connection, see <i>Setting up PC communication with the Mini-C Terminal</i> on page 53.

Status signalling in easyMail

Status information

The top of the display shows the most important status information.



You can click each status area to get details, or use the View menu to enter the status pages.

Information of events

Popup windows

When an event requires your attention, a popup window appears.

When you have read the text, select **OK** to close the window. The latest event is shown in the info bar at the bottom of the page and is added to the information log.

Information log

To see the information log, select **View > Info log**.

The log shows the events that are registered in your Mini-C System.

Service and repair

Should your Thrane & Thrane product fail, please contact your dealer or installer, or the nearest Thrane & Thrane partner. You will find the partner details on www.thrane.com where you also find the Thrane & Thrane Self Service Center web-portal, which may help you solving the problem.

Your dealer, installer or Thrane & Thrane partner will assist you whether the need is user training, technical support, arranging on-site repair or sending the product for repair.

Your dealer, installer or Thrane & Thrane partner will also take care of any warranty issue.

Repacking for shipment

Should you need to send the product for repair, please read the below information before packing the product.

The shipping cartons for the SAILOR 6120/30/40/50 system have been carefully designed to protect the equipment during shipment. The cartons and their associated packing material should be used when repacking for shipment. Attach a tag indicating the type of service required, return address, model number and full serial number. Mark the carton “FRAGILE” to ensure careful handling.

Note

Correct shipment is the customer's own responsibility.

Conformity

The Mini-C Systems SAILOR 6120, SAILOR 6130, SAILOR 6140 and SAILOR 6150 are CE certified (R&TTE directive) as stated in “Declaration of Conformity with R&TTE Directive”, enclosed in electronic copy on the next pages (one declaration for each system).

Thrane & Thrane A/S

Declaration of Conformity with R&TTE Directive

The undersigned of this letter declares that the following equipment complies with the specifications of EC directive 1999/5/EC concerning Radio & Telecommunications Terminal Equipment.

Equipment included in this declaration

TT-6120A	SAILOR 6120 SSA System consisting of:	
TT-3027SSA	SAILOR 3027 SSA Terminal	PN = 403027SSA
TT-6194A	THRANE 6194 Term. Ctrl. Unit	PN = 406194A
And		
TT-6100-913	SAILOR 6100-913 SSA Kit	PN = 406100-913
or		
TT-6100-916	SAILOR 6100-916 SSA US Kit	PN = 406100-916

The system will exist in a SAILOR, SAM and HIGHLANDER variant and NEUTRAL variant for other OEMs. The only difference is in labeling and extension in PN.

Equipment Applicability

The TT-6120A SAILOR 6120 SSA System is a Non SOLAS system without Distress capability that provides global data communication and tracking information through the Inmarsat satellite service world wide between a vessel and any destination in the world.

Declaration

The requirement with respect to the LVD directive 73/23/EC is met by conforming to the harmonized EU standard EN 60950. The protection requirement with respect to the EMC directive 89/336/EC is met by conforming to the harmonized EU standard EN 60945. Effective use of frequency spectrum is met by conforming to the harmonized EU standard ETSI EN 301 426 and ETSI ETS 300 460.

Manufacturer

Thrane & Thrane A/S
Lundtoftegårdsvej 93D, DK-2800 Kgs. Lyngby, Denmark
Porsvej 2, DK-9200 Aalborg SV, Denmark

Place and Date

Kgs. Lyngby, 13. May 2011


Walther Thygesen, CEO
Thrane & Thrane A/S



Doc. no. 99-133104-A

Thrane & Thrane A/S · T +45 39 55 88 00 · F +45 39 55 88 88 · info@thrane.com · www.thrane.com

Head office: Lundtoftegårdsvej 93 D · 2800 Kgs. Lyngby · Denmark

Aalborg office: Porsvej 2 · PO Box 7071 · 9200 Aalborg SV · Denmark

Bank: Danske Bank · Comp.reg.: 65 72 46 18 · VAT: DK-20 64 64 46



Page: 1 of 1



Thrane & Thrane A/S

Declaration of Conformity with R&TTE Directive

The undersigned of this letter declares that the following equipment complies with the specifications of EC directive 1999/5/EC concerning Radio & Telecommunications Terminal Equipment.

Equipment included in this declaration

TT-6130A SAILOR 6130 LRIT System consisting of:
TT-3027LT SAILOR 3027 LRIT Terminal PN = 403027LT

The system will exist in a SAILOR, SAM and HIGHLANDER variant and NEUTRAL variant for other OEMs. The only difference is in labeling and extension in PN.

Equipment Applicability

The TT-6130A SAILOR 6130 LRIT System is a Non SOLAS system without Distress capability that provides global data communication and tracking information through the Inmarsat satellite service world wide between a vessel and any destination in the world.

Declaration

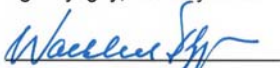
The requirement with respect to the LVD directive 73/23/EC is met by conforming to the harmonized EU standard EN 60950. The protection requirement with respect to the EMC directive 89/336/EC is met by conforming to the harmonized EU standard EN 60945. Effective use of frequency spectrum is met by conforming to the harmonized EU standard ETSI EN 301 426 and ETSI ETS 300 460.

Manufacturer

Thrane & Thrane A/S Lundtoftegårdsvej 93D, DK-2800 Kgs. Lyngby, Denmark
Porsvej 2, DK-9200 Aalborg SV, Denmark

Place and Date

Kgs. Lyngby, 13. May 2011



Walther Thygesen, CEO
Thrane & Thrane A/S



Doc. no. 99-133103-A

Thrane & Thrane A/S • T +45 39 55 88 00 • F +45 39 55 88 88 • info@thrane.com • www.thrane.com

Head office: Lundtoftegårdsvej 93 D • 2800 Kgs. Lyngby • Denmark

Aalborg office: Porsvej 2 • PO Box 7071 • 9200 Aalborg SV • Denmark

Bank: Danske Bank • Compureg.: 65 72 46 18 • VAT: DK:20 64 64 46



Page: 1 of 1



Thrane & Thrane A/S

Declaration of Conformity with R&TTE Directive

The undersigned of this letter declares that the following equipment complies with the specifications of EC directive 1999/5/EC concerning Radio & Telecommunications Terminal Equipment.

Equipment included in this declaration

TT-6140A SAILOR 6140 Maritime System consisting of:
TT-3027M SAILOR 3027 Maritime Terminal PN = 403027M

The system will exist in a SAILOR variant and NEUTRAL variant for OEMs. The only difference is in labeling and "-NEU" extension in PN.

Equipment Applicability

The TT-6140A SAILOR 6140 Maritime System is a Non SOLAS system without Distress capability that provides global data communication and tracking information through the Inmarsat satellite service world wide between a vessel and any destination in the world.

Declaration

The requirement with respect to the LVD directive 73/23/EC is met by conforming to the harmonized EU standard EN 60950. The protection requirement with respect to the EMC directive 89/336/EC is met by conforming to the harmonized EU standard EN 60945. Effective use of frequency spectrum is met by conforming to the harmonized EU standard ETSI EN 301 426 and ETSI ETS 300 460.

Manufacturer

Thrane & Thrane A/S Lundtoftegårdsvej 93D, DK-2800 Kgs. Lyngby, Denmark
Porsvej 2, DK-9200 Aalborg SV, Denmark

Place and Date

Kgs. Lyngby, 13. May 2011



Walther Thygesen, CEO
Thrane & Thrane A/S



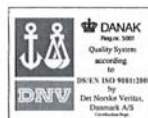
Doc. no. 99-133102-A

Thrane & Thrane A/S · T +45 39 55 88 00 · F +45 39 55 88 88 · info@thrane.com · www.thrane.com

Head office: Lundtoftegårdsvej 93 D · 2800 Kgs. Lyngby · Denmark

Aalborg office: Porsvej 2 · PO Box 7071 · 9200 Aalborg SV · Denmark

Bank: Danske Bank · Comp.reg.: 65 72 46 18 · VAT: DK-20 64 64 46



Page: 1 of 1



Thrane & Thrane A/S

Declaration of Conformity with R&TTE Directive

The undersigned of this letter declares that the following equipment complies with the specifications of EC directive 1999/5/EC concerning Radio & Telecommunications Terminal Equipment.

Equipment included in this declaration

TT-6150A	SAILOR 6150 Non SOLAS System consisting of:	
TT-3027D	SAILOR 3027 Non SOLAS Terminal	PN = 403027D
TT-6108A	SAILOR 6108 Distress Panel	PN = 406108A
And		
TT-6006A	SAILOR 6006 Message Terminal	PN = 406006A
TT-6001A	SAILOR 6001 Keyboard	PN = 406001A
Or		
TT-6194A	THRANE 6194 Term. Ctrl. Unit	PN = 406194A

The system will exist in a SAILOR, SAM and HIGHLANDER variant and NEUTRAL variant for other OEMs. The only difference is in labeling and extension in PN.

Equipment Applicability

The TT-6150A SAILOR 6150 Non SOLAS System is a Non SOLAS system with Distress capability that provides global data communication and tracking information through the Inmarsat satellite service world wide between a vessel and any destination in the world.

Declaration


The requirement with respect to the LVD directive 73/23/EC is met by conforming to the harmonized EU standard EN 60950. The protection requirement with respect to the EMC directive 89/336/EC is met by conforming to the harmonized EU standard EN 60945. Effective use of frequency spectrum is met by conforming to the harmonized EU standard ETSI EN 301 426 and ETSI ETS 300 460.

Manufacturer

Thrane & Thrane A/S Lundtoftegårdsvej 93D, DK-2800 Kgs. Lyngby, Denmark
Porsvej 2, DK-9200 Aalborg SV, Denmark

Place and Date

Kgs. Lyngby, 13. May 2011


Walther Thygesen, CEO

Thrane & Thrane A/S

Doc. no. 99-133101-A



GNU License texts

GNU General Public License

Version 2, June 1991

Copyright (C) 1989, 1991 Free Software Foundation, Inc., 51 Franklin Street, Fifth Floor, Boston, MA 02110-1301 USA. Everyone is permitted to copy and distribute verbatim copies of this license document, but changing it is not allowed.

Preamble

The licenses for most software are designed to take away your freedom to share and change it. By contrast, the GNU General Public License is intended to guarantee your freedom to share and change free software--to make sure the software is free for all its users. This General Public License applies to most of the Free Software Foundation's software and to any other program whose authors commit to using it. (Some other Free Software Foundation software is covered by the GNU Lesser General Public License instead.) You can apply it to your programs, too.

When we speak of free software, we are referring to freedom, not price. Our General Public Licenses are designed to make sure that you have the freedom to distribute copies of free software (and charge for this service if you wish), that you receive source code or can get it if you want it, that you can change the software or use pieces of it in new free programs; and that you know you can do these things.

To protect your rights, we need to make restrictions that forbid anyone to deny you these rights or to ask you to surrender the rights. These restrictions translate to certain responsibilities for you if you distribute copies of the software, or if you modify it.

For example, if you distribute copies of such a program, whether gratis or for a fee, you must give the recipients all the rights that you have. You must make sure that they, too, receive or can get the source code. And you must show them these terms so they know their rights.

We protect your rights with two steps: (1) copyright the software, and (2) offer you this license which gives you legal permission to copy, distribute and/or modify the software.

Also, for each author's protection and ours, we want to make certain that everyone understands that there is no warranty for this free software. If the software is modified by someone else and passed on, we want its recipients to know that what they have is not the original, so that any problems introduced by others will not reflect on the original authors' reputations.

Finally, any free program is threatened constantly by software patents. We wish to avoid the danger that redistributors of a free program will individually obtain patent licenses, in effect making the program proprietary. To prevent this, we have made it clear that any patent must be licensed for everyone's free use or not licensed at all.

The precise terms and conditions for copying, distribution and modification follow.

GNU GENERAL PUBLIC LICENSE

TERMS AND CONDITIONS FOR COPYING, DISTRIBUTION AND MODIFICATION

0. This License applies to any program or other work which contains a notice placed by the copyright holder saying it may be distributed under the terms of this General Public License. The "Program", below, refers to any such program or work, and a "work based on the Program" means either the Program or any derivative work under copyright law: that is to say, a work containing the Program or a portion of it, either verbatim or with modifications and/or translated into another language. (Hereinafter, translation is included without limitation in the term "modification".) Each licensee is addressed as "you".

Activities other than copying, distribution and modification are not covered by this License; they are outside its scope. The act of running the Program is not restricted, and the output from the Program is covered only if its contents constitute a work based on the Program (independent of having been made by running the Program). Whether that is true depends on what the Program does.

1. You may copy and distribute verbatim copies of the Program's source code as you receive it, in any medium, provided that you conspicuously and appropriately publish on each copy an appropriate copyright notice and disclaimer of warranty; keep intact all the notices that refer to this License and to the absence of any warranty; and give any other recipients of the Program a copy of this License along with the Program.

You may charge a fee for the physical act of transferring a copy, and you may at your option offer warranty protection in exchange for a fee.

2. You may modify your copy or copies of the Program or any portion of it, thus forming a work based on the Program, and copy and distribute such modifications or work under the terms of Section 1 above, provided that you also meet all of these conditions:

a) You must cause the modified files to carry prominent notices stating that you changed the files and the date of any change.

b) You must cause any work that you distribute or publish, that in whole or in part contains or is derived from the Program or any part thereof, to be licensed as a whole at no charge to all third parties under the terms of this License.

c) If the modified program normally reads commands interactively when run, you must cause it, when started running for such interactive use in the most ordinary way, to print or display an announcement including an appropriate copyright notice and a notice that there is no warranty (or else, saying that you provide a warranty) and that users may redistribute the program under these conditions, and telling the user how to view a copy of this License. (Exception: if the Program itself is interactive but does not normally print such an announcement, your work based on the Program is not required to print an announcement.)

These requirements apply to the modified work as a whole. If identifiable sections of that work are not derived from the Program, and can be reasonably considered independent and separate works in themselves, then this License, and its terms, do not apply to those sections when you distribute them as separate works. But when you distribute the same sections as part of a whole which is a work based on the Program, the distribution of the whole must be on the terms of this License, whose permissions for other licensees extend to the entire whole, and thus to each and every part regardless of who wrote it.

Thus, it is not the intent of this section to claim rights or contest your rights to work written entirely by you; rather, the intent is to exercise the right to control the distribution of derivative or collective works based on the Program. In addition, mere aggregation of another work not based on the Program with the Program (or with a work based on the Program) on a volume of a storage or distribution medium does not bring the other work under the scope of this License.

3. You may copy and distribute the Program (or a work based on it, under Section 2) in object code or executable form under the terms of Sections 1 and 2 above provided that you also do one of the following:

a) Accompany it with the complete corresponding machine-readable source code, which must be distributed under the terms of Sections 1 and 2 above on a medium customarily used for software interchange; or,

b) Accompany it with a written offer, valid for at least three years, to give any third party, for a charge no more than your cost of physically performing source distribution, a complete machine-readable copy of the corresponding source code, to be distributed under the terms of Sections 1 and 2 above on a medium customarily used for software interchange; or,

c) Accompany it with the information you received as to the offer to distribute corresponding source code. (This alternative is allowed only for noncommercial distribution and only if you received the program in object code or executable form with such an offer, in accord with Subsection b above.)

The source code for a work means the preferred form of the work for making modifications to it. For an executable work, complete source code means all the source code for all modules it contains, plus any associated interface definition files, plus the scripts used to control compilation and installation of the executable. However, as a special exception, the source code distributed need not include anything that is normally distributed (in either source or binary form) with the major components (compiler, kernel, and so on) of the operating system on which the executable runs, unless that component itself accompanies the executable.

If distribution of executable or object code is made by offering access to copy from a designated place, then offering equivalent access to copy the source code from the same place counts as distribution of the source code, even though third parties are not compelled to copy the source along with the object code.

4. You may not copy, modify, sublicense, or distribute the Program except as expressly provided under this License. Any attempt otherwise to copy, modify, sublicense or distribute the Program is void, and will automatically terminate your rights under this License. However, parties who have received copies, or rights, from you under this License will not have their licenses terminated so long as such parties remain in full compliance.

5. You are not required to accept this License, since you have not signed it. However, nothing else grants you permission to modify or distribute the Program or its derivative works. These actions are prohibited by law if you do not accept this License. Therefore, by modifying or distributing the Program (or any work based on the Program), you indicate your acceptance of this License to do so, and all its terms and conditions for copying, distributing or modifying the Program or works based on it.

6. Each time you redistribute the Program (or any work based on the Program), the recipient automatically receives a license from the original licensor to copy, distribute or modify the Program subject to these terms and conditions. You may not impose any further restrictions on the recipients' exercise of the rights granted herein. You are not responsible for enforcing compliance by third parties to this License.

7. If, as a consequence of a court judgment or allegation of patent infringement or for any other reason (not limited to patent issues), conditions are imposed on you (whether by court order, agreement or otherwise) that contradict the conditions of this License, they do not excuse you from the conditions of this License. If you cannot distribute so as to satisfy simultaneously your obligations under this License and any other pertinent obligations, then as a consequence you may not distribute the Program at all. For example, if a patent license would not permit royalty-free redistribution of the Program by all those who receive copies directly or indirectly through you, then the only way you could satisfy both it and this License would be to refrain entirely from distribution of the Program. If any portion of this section is held invalid or unenforceable under any particular circumstance, the balance of the section is intended to apply and the section as a whole is intended to apply in other circumstances.

It is not the purpose of this section to induce you to infringe any patents or other property right claims or to contest validity of any such claims; this section has the sole purpose of protecting the integrity of the free software distribution system, which is implemented by public license practices. Many people have made generous contributions to the wide range of software distributed through that system in reliance on consistent application of that system; it is up to the author/donor to decide if he or she is willing to distribute software through any other system and a licensee cannot impose that choice.

This section is intended to make thoroughly clear what is believed to be a consequence of the rest of this License.

8. If the distribution and/or use of the Program is restricted in certain countries either by patents or by copyrighted interfaces, the original copyright holder who places the Program under this License may add an explicit geographical distribution limitation excluding those countries, so that distribution is permitted only in or among countries not thus excluded. In such case, this License incorporates the limitation as if written in the body of this License.

9. The Free Software Foundation may publish revised and/or new versions of the General Public License from time to time. Such new versions will be similar in spirit to the present version, but may differ in detail to address new problems or concerns.

Each version is given a distinguishing version number. If the Program specifies a version number of this License which applies to it and "any later version", you have the option of following the terms and conditions either of that version or of any later version published by the Free Software Foundation. If the Program does not specify a version number of this License, you may choose any version ever published by the Free Software Foundation.

10. If you wish to incorporate parts of the Program into other free programs whose distribution conditions are different, write to the author to ask for permission. For software which is copyrighted by the Free Software Foundation, write to the Free Software Foundation; we sometimes make exceptions for this. Our decision will be guided by the two goals of preserving the free status of all derivatives of our free software and of promoting the sharing and reuse of software generally.

NO WARRANTY

11. BECAUSE THE PROGRAM IS LICENSED FREE OF CHARGE, THERE IS NO WARRANTY FOR THE PROGRAM, TO THE EXTENT PERMITTED BY APPLICABLE LAW. EXCEPT WHEN OTHERWISE STATED IN WRITING THE COPYRIGHT HOLDERS AND/OR OTHER PARTIES PROVIDE THE PROGRAM "AS IS" WITHOUT WARRANTY OF ANY KIND, EITHER EXPRESSED OR IMPLIED, INCLUDING, BUT NOT LIMITED TO, THE IMPLIED WARRANTIES OF MERCHANTABILITY AND FITNESS FOR A PARTICULAR PURPOSE. THE ENTIRE RISK AS TO THE QUALITY AND PERFORMANCE OF THE PROGRAM IS WITH YOU. SHOULD THE PROGRAM PROVE DEFECTIVE, YOU ASSUME THE COST OF ALL NECESSARY SERVICING, REPAIR OR CORRECTION.

12. IN NO EVENT UNLESS REQUIRED BY APPLICABLE LAW OR AGREED TO IN WRITING WILL ANY COPYRIGHT HOLDER, OR ANY OTHER PARTY WHO MAY MODIFY AND/OR REDISTRIBUTE THE PROGRAM AS PERMITTED ABOVE, BE LIABLE TO YOU FOR DAMAGES, INCLUDING ANY GENERAL, SPECIAL, INCIDENTAL OR CONSEQUENTIAL DAMAGES ARISING OUT OF THE USE OR INABILITY TO USE THE PROGRAM (INCLUDING BUT NOT LIMITED TO LOSS OF DATA OR DATA BEING RENDERED INACCURATE OR LOSSES SUSTAINED BY YOU OR THIRD PARTIES OR A FAILURE OF THE PROGRAM TO OPERATE WITH ANY OTHER PROGRAMS), EVEN IF SUCH HOLDER OR OTHER PARTY HAS BEEN ADVISED OF THE POSSIBILITY OF SUCH DAMAGES.

END OF TERMS AND CONDITIONS

How to apply these terms to your new programs

If you develop a new program, and you want it to be of the greatest possible use to the public, the best way to achieve this is to make it free software which everyone can redistribute and change under these terms.

To do so, attach the following notices to the program. It is safest to attach them to the start of each source file to most effectively convey the exclusion of warranty; and each file should have at least the "copyright" line and a pointer to where the full notice is found.

Copyright (C)

This program is free software; you can redistribute it and/or modify it under the terms of the GNU General Public License as published by the Free Software Foundation; either version 2 of the License, or (at your option) any later version.

This program is distributed in the hope that it will be useful, but WITHOUT ANY WARRANTY; without even the implied warranty of MERCHANTABILITY or FITNESS FOR A PARTICULAR PURPOSE. See the GNU General Public License for more details.

You should have received a copy of the GNU General Public License along with this program; if not, write to the Free Software Foundation, Inc., 51 Franklin Street, Fifth Floor, Boston, MA 02110-1301 USA.

Also add information on how to contact you by electronic and paper mail. If the program is interactive, make it output a short notice like this when it starts in an interactive mode:

Gnomovision version 69, Copyright (C) year name of author

Gnomovision comes with ABSOLUTELY NO WARRANTY; for details type `show w`.

This is free software, and you are welcome to redistribute it under certain conditions; type `show c` for details.

The hypothetical commands `show w` and `show c` should show the appropriate parts of the General Public License. Of course, the commands you use may be called something other than `show w` and `show c`; they could even be mouse-clicks or menu items--whatever suits your program.

You should also get your employer (if you work as a programmer) or your school, if any, to sign a "copyright disclaimer" for the program, if necessary. Here is a sample; alter the names:

Yoyodyne, Inc., hereby disclaims all copyright interest in the program 'Gnomovision' (which makes passes at compilers) written by James Hacker.

signature of Ty Coon, 1 April 1989

Ty Coon, President of Vice

This General Public License does not permit incorporating your program into proprietary programs. If your program is a subroutine library, you may consider it more useful to permit linking proprietary applications with the library. If this is what you want to do, use the GNU Lesser General Public License instead of this License.

GNU Lesser General Public License

Version 2.1, February 1999

Copyright (C) 1991, 1999 Free Software Foundation, Inc., 51 Franklin Street, Fifth Floor, Boston, MA 02110-1301 USA. Everyone is permitted to copy and distribute verbatim copies of this license document, but changing it is not allowed.

[This is the first released version of the Lesser GPL. It also counts as the successor of the GNU Library Public License, version 2, hence the version number 2.1.]

Preamble

The licenses for most software are designed to take away your freedom to share and change it. By contrast, the GNU General Public Licenses are intended to guarantee your freedom to share and change free software--to make sure the software is free for all its users.

This license, the Lesser General Public License, applies to some specially designated software packages--typically libraries--of the Free Software Foundation and other authors who decide to use it. You can use it too, but we suggest you first think carefully about whether this license or the ordinary General Public License is the better strategy to use in any particular case, based on the explanations below.

When we speak of free software, we are referring to freedom of use, not price. Our General Public Licenses are designed to make sure that you have the freedom to distribute copies of free software (and charge for this service if you wish); that you receive source code or can get it if you want it; that you can change the software and use pieces of it in new free programs; and that you are informed that you can do these things.

To protect your rights, we need to make restrictions that forbid distributors to deny you these rights or to ask you to surrender these rights. These restrictions translate to certain responsibilities for you if you distribute copies of the library or if you modify it.

For example, if you distribute copies of the library, whether gratis or for a fee, you must give the recipients all the rights that we gave you. You must make sure that they, too, receive or can get the source code. If you link other code with the library, you must provide complete object files to the recipients, so that they can relink them with the library after making changes to the library and recompiling it. And you must show them these terms so they know their rights.

We protect your rights with a two-step method: (1) we copyright the library, and (2) we offer you this license, which gives you legal permission to copy, distribute and/or modify the library.

To protect each distributor, we want to make it very clear that there is no warranty for the free library. Also, if the library is modified by someone else and passed on, the recipients should know that what they have is not the original version, so that the original author's reputation will not be affected by problems that might be introduced by others.

Finally, software patents pose a constant threat to the existence of any free program. We wish to make sure that a company cannot effectively restrict the users of a free program by obtaining a restrictive license from a patent holder. Therefore, we insist that any patent license obtained for a version of the library must be consistent with the full freedom of use specified in this license.

Most GNU software, including some libraries, is covered by the ordinary GNU General Public License. This license, the GNU Lesser General Public License, applies to certain designated libraries, and is quite different from the ordinary General Public License. We use this license for certain libraries in order to permit linking those libraries into non-free programs.

When a program is linked with a library, whether statically or using a shared library, the combination of the two is legally speaking a combined work, a derivative of the original library. The ordinary General Public License therefore permits such linking only if the entire combination fits its criteria of freedom. The Lesser General Public License permits more lax criteria for linking other code with the library.

We call this license the "Lesser" General Public License because it does Less to protect the user's freedom than the ordinary General Public License. It also provides other free software developers Less of an advantage over competing non-free programs. These disadvantages are the reason we use the ordinary General Public License for many libraries. However, the Lesser license provides advantages in certain special circumstances.

For example, on rare occasions, there may be a special need to encourage the widest possible use of a certain library, so that it becomes a de-facto standard. To achieve this, non-free programs must be allowed to use the library. A more frequent case is that a free library does the same job as widely used non-free libraries. In this

case, there is little to gain by limiting the free library to free software only, so we use the Lesser General Public License.

In other cases, permission to use a particular library in non-free programs enables a greater number of people to use a large body of free software. For example, permission to use the GNU C Library in non-free programs enables many more people to use the whole GNU operating system, as well as its variant, the GNU/Linux operating system. Although the Lesser General Public License is less protective of the users' freedom, it does ensure that the user of a program that is linked with the Library has the freedom and the wherewithal to run that program using a modified version of the Library.

The precise terms and conditions for copying, distribution and modification follow. Pay close attention to the difference between a "work based on the library" and a "work that uses the library". The former contains code derived from the library, whereas the latter must be combined with the library in order to run.

GNU LESSER GENERAL PUBLIC LICENSE TERMS AND CONDITIONS FOR COPYING, DISTRIBUTION AND MODIFICATION

0. This License Agreement applies to any software library or other program which contains a notice placed by the copyright holder or other authorized party saying it may be distributed under the terms of this Lesser General Public License (also called "this License"). Each licensee is addressed as "you".

A "library" means a collection of software functions and/or data prepared so as to be conveniently linked with application programs (which use some of those functions and data) to form executables.

The "Library", below, refers to any such software library or work which has been distributed under these terms. A "work based on the Library" means either the Library or any derivative work under copyright law: that is to say, a work containing the Library or a portion of it, either verbatim or with modifications and/or translated straightforwardly into another language. (Hereinafter, translation is included without limitation in the term "modification".)

"Source code" for a work means the preferred form of the work for making modifications to it. For a library, complete source code means all the source code for all modules it contains, plus any associated interface definition files, plus the scripts used to control compilation and installation of the library.

Activities other than copying, distribution and modification are not covered by this License; they are outside its scope. The act of running a program using the Library is not restricted, and output from such a program is covered only if its contents constitute a work based on the Library (independent of the use of the Library in a tool for writing it). Whether that is true depends on what the Library does and what the program that uses the Library does.

1. You may copy and distribute verbatim copies of the Library's complete source code as you receive it, in any medium, provided that you conspicuously and appropriately publish on each copy an appropriate copyright notice and disclaimer of warranty; keep intact all the notices that refer to this License and to the absence of any warranty; and distribute a copy of this License along with the Library.

You may charge a fee for the physical act of transferring a copy, and you may at your option offer warranty protection in exchange for a fee.

2. You may modify your copy or copies of the Library or any portion of it, thus forming a work based on the Library, and copy and distribute such modifications or work under the terms of Section 1 above, provided that you also meet all of these conditions:

- a) The modified work must itself be a software library.
- b) You must cause the files modified to carry prominent notices stating that you changed the files and the date of any change.
- c) You must cause the whole of the work to be licensed at no charge to all third parties under the terms of this License.
- d) If a facility in the modified Library refers to a function or a table of data to be supplied by an application program that uses the facility, other than as an argument passed when the facility is invoked, then you must make a good faith effort to ensure that, in the event an application does not supply such function or table, the facility still operates, and performs whatever part of its purpose remains meaningful.
(For example, a function in a library to compute square roots has a purpose that is entirely well-defined independent of the application. Therefore, Subsection 2d requires that any application-supplied function or table used by this function must be optional: if the application does not supply it, the square root function must still compute square roots.)

These requirements apply to the modified work as a whole. If identifiable sections of that work are not derived from the Library, and can be reasonably considered independent and separate works in themselves, then this License, and its terms, do not apply to those sections when you distribute them as separate works. But when you

distribute the same sections as part of a whole which is a work based on the Library, the distribution of the whole must be on the terms of this License, whose permissions for other licensees extend to the entire whole, and thus to each and every part regardless of who wrote it.

Thus, it is not the intent of this section to claim rights or contest your rights to work written entirely by you; rather, the intent is to exercise the right to control the distribution of derivative or collective works based on the Library. In addition, mere aggregation of another work not based on the Library with the Library (or with a work based on the Library) on a volume of a storage or distribution medium does not bring the other work under the scope of this License.

3. You may opt to apply the terms of the ordinary GNU General Public License instead of this License to a given copy of the Library. To do this, you must alter all the notices that refer to this License, so that they refer to the ordinary GNU General Public License, version 2, instead of to this License. (If a newer version than version 2 of the ordinary GNU General Public License has appeared, then you can specify that version instead if you wish.) Do not make any other change in these notices.

Once this change is made in a given copy, it is irreversible for that copy, so the ordinary GNU General Public License applies to all subsequent copies and derivative works made from that copy.

This option is useful when you wish to copy part of the code of the Library into a program that is not a library.

4. You may copy and distribute the Library (or a portion or derivative of it, under Section 2) in object code or executable form under the terms of Sections 1 and 2 above provided that you accompany it with the complete corresponding machine-readable source code, which must be distributed under the terms of Sections 1 and 2 above on a medium customarily used for software interchange.

If distribution of object code is made by offering access to copy from a designated place, then offering equivalent access to copy the source code from the same place satisfies the requirement to distribute the source code, even though third parties are not compelled to copy the source along with the object code.

5. A program that contains no derivative of any portion of the Library, but is designed to work with the Library by being compiled or linked with it, is called a "work that uses the Library". Such a work, in isolation, is not a derivative work of the Library, and therefore falls outside the scope of this License.

However, linking a "work that uses the Library" with the Library creates an executable that is a derivative of the Library (because it contains portions of the Library), rather than a "work that uses the library". The executable is therefore covered by this License. Section 6 states terms for distribution of such executables.

When a "work that uses the Library" uses material from a header file that is part of the Library, the object code for the work may be a derivative work of the Library even though the source code is not. Whether this is true is especially significant if the work can be linked without the Library, or if the work is itself a library. The threshold for this to be true is not precisely defined by law.

If such an object file uses only numerical parameters, data structure layouts and accessors, and small macros and small inline functions (ten lines or less in length), then the use of the object file is unrestricted, regardless of whether it is legally a derivative work. (Executables containing this object code plus portions of the Library will still fall under Section 6.)

Otherwise, if the work is a derivative of the Library, you may distribute the object code for the work under the terms of Section 6. Any executables containing that work also fall under Section 6, whether or not they are linked directly with the Library itself.

6. As an exception to the Sections above, you may also combine or link a "work that uses the Library" with the Library to produce a work containing portions of the Library, and distribute that work under terms of your choice, provided that the terms permit modification of the work for the customer's own use and reverse engineering for debugging such modifications.

You must give prominent notice with each copy of the work that the Library is used in it and that the Library and its use are covered by this License. You must supply a copy of this License. If the work during execution displays copyright notices, you must include the copyright notice for the Library among them, as well as a reference directing the user to the copy of this License. Also, you must do one of these things:

- a) Accompany the work with the complete corresponding machine-readable source code for the Library including whatever changes were used in the work (which must be distributed under Sections 1 and 2 above); and, if the work is an executable linked with the Library, with the complete machine-readable "work that uses the Library", as object code and/or source code, so that the user can modify the Library and then relink to produce a modified executable containing the modified Library. (It is understood that the user who changes the contents of definitions files in the Library will not necessarily be able to recompile the application to use the modified definitions.)

- b) Use a suitable shared library mechanism for linking with the Library. A suitable mechanism is one that (1) uses at run time a copy of the library already present on the user's computer system, rather than copying library functions into the executable, and (2) will operate properly with a modified version of the library, if the user installs one, as long as the modified version is interface-compatible with the version that the work was made with.
- c) Accompany the work with a written offer, valid for at least three years, to give the same user the materials specified in Subsection 6a, above, for a charge no more than the cost of performing this distribution.
- d) If distribution of the work is made by offering access to copy from a designated place, offer equivalent access to copy the above specified materials from the same place.
- e) Verify that the user has already received a copy of these materials or that you have already sent this user a copy.

For an executable, the required form of the "work that uses the Library" must include any data and utility programs needed for reproducing the executable from it. However, as a special exception, the materials to be distributed need not include anything that is normally distributed (in either source or binary form) with the major components (compiler, kernel, and so on) of the operating system on which the executable runs, unless that component itself accompanies the executable.

It may happen that this requirement contradicts the license restrictions of other proprietary libraries that do not normally accompany the operating system. Such a contradiction means you cannot use both them and the Library together in an executable that you distribute.

7. You may place library facilities that are a work based on the Library side-by-side in a single library together with other library facilities not covered by this License, and distribute such a combined library, provided that the separate distribution of the work based on the Library and of the other library facilities is otherwise permitted, and provided that you do these two things:

- a) Accompany the combined library with a copy of the same work based on the Library, uncombined with any other library facilities. This must be distributed under the terms of the Sections above.
- b) Give prominent notice with the combined library of the fact that part of it is a work based on the Library, and explaining where to find the accompanying uncombined form of the same work.

8. You may not copy, modify, sublicense, link with, or distribute the Library except as expressly provided under this License. Any attempt otherwise to copy, modify, sublicense, link with, or distribute the Library is void, and will automatically terminate your rights under this License. However, parties who have received copies, or rights, from you under this License will not have their licenses terminated so long as such parties remain in full compliance.

9. You are not required to accept this License, since you have not signed it. However, nothing else grants you permission to modify or distribute the Library or its derivative works. These actions are prohibited by law if you do not accept this License. Therefore, by modifying or distributing the Library (or any work based on the Library), you indicate your acceptance of this License to do so, and all its terms and conditions for copying, distributing or modifying the Library or works based on it.

10. Each time you redistribute the Library (or any work based on the Library), the recipient automatically receives a license from the original licensor to copy, distribute, link with or modify the Library subject to these terms and conditions. You may not impose any further restrictions on the recipients' exercise of the rights granted herein. You are not responsible for enforcing compliance by third parties with this License.

11. If, as a consequence of a court judgment or allegation of patent infringement or for any other reason (not limited to patent issues), conditions are imposed on you (whether by court order, agreement or otherwise) that contradict the conditions of this License, they do not excuse you from the conditions of this License. If you cannot distribute so as to satisfy simultaneously your obligations under this License and any other pertinent obligations, then as a consequence you may not distribute the Library at all. For example, if a patent license would not permit royalty-free redistribution of the Library by all those who receive copies directly or indirectly through you, then the only way you could satisfy both it and this License would be to refrain entirely from distribution of the Library.

If any portion of this section is held invalid or unenforceable under any particular circumstance, the balance of the section is intended to apply, and the section as a whole is intended to apply in other circumstances.

It is not the purpose of this section to induce you to infringe any patents or other property right claims or to contest validity of any such claims; this section has the sole purpose of protecting the integrity of the free software distribution system which is implemented by public license practices. Many people have made generous contributions to the wide range of software distributed through that system in reliance on consistent application of that system; it is up to the author/donor to decide if he or she is willing to distribute software through any other system and a licensee cannot impose that choice.

This section is intended to make thoroughly clear what is believed to be a consequence of the rest of this License.

12. If the distribution and/or use of the Library is restricted in certain countries either by patents or by copyrighted interfaces, the original copyright holder who places the Library under this License may add an explicit geographical distribution limitation excluding those countries, so that distribution is permitted only in or among countries not thus excluded. In such case, this License incorporates the limitation as if written in the body of this License.

13. The Free Software Foundation may publish revised and/or new versions of the Lesser General Public License from time to time. Such new versions will be similar in spirit to the present version, but may differ in detail to address new problems or concerns.

Each version is given a distinguishing version number. If the Library specifies a version number of this License which applies to it and "any later version", you have the option of following the terms and conditions either of that version or of any later version published by the Free Software Foundation. If the Library does not specify a license version number, you may choose any version ever published by the Free Software Foundation.

14. If you wish to incorporate parts of the Library into other free programs whose distribution conditions are incompatible with these, write to the author to ask for permission. For software which is copyrighted by the Free Software Foundation, write to the Free Software Foundation; we sometimes make exceptions for this. Our decision will be guided by the two goals of preserving the free status of all derivatives of our free software and of promoting the sharing and reuse of software generally.

NO WARRANTY

15. BECAUSE THE LIBRARY IS LICENSED FREE OF CHARGE, THERE IS NO WARRANTY FOR THE LIBRARY, TO THE EXTENT PERMITTED BY APPLICABLE LAW. EXCEPT WHEN OTHERWISE STATED IN WRITING THE COPYRIGHT HOLDERS AND/OR OTHER PARTIES PROVIDE THE LIBRARY "AS IS" WITHOUT WARRANTY OF ANY KIND, EITHER EXPRESSED OR IMPLIED, INCLUDING, BUT NOT LIMITED TO, THE IMPLIED WARRANTIES OF MERCHANTABILITY AND FITNESS FOR A PARTICULAR PURPOSE. THE ENTIRE RISK AS TO THE QUALITY AND PERFORMANCE OF THE LIBRARY IS WITH YOU. SHOULD THE LIBRARY PROVE DEFECTIVE, YOU ASSUME THE COST OF ALL NECESSARY SERVICING, REPAIR OR CORRECTION.

16. IN NO EVENT UNLESS REQUIRED BY APPLICABLE LAW OR AGREED TO IN WRITING WILL ANY COPYRIGHT HOLDER, OR ANY OTHER PARTY WHO MAY MODIFY AND/OR REDISTRIBUTE THE LIBRARY AS PERMITTED ABOVE, BE LIABLE TO YOU FOR DAMAGES, INCLUDING ANY GENERAL, SPECIAL, INCIDENTAL OR CONSEQUENTIAL DAMAGES ARISING OUT OF THE USE OR INABILITY TO USE THE LIBRARY (INCLUDING BUT NOT LIMITED TO LOSS OF DATA OR DATA BEING RENDERED INACCURATE OR LOSSES SUSTAINED BY YOU OR THIRD PARTIES OR A FAILURE OF THE LIBRARY TO OPERATE WITH ANY OTHER SOFTWARE), EVEN IF SUCH HOLDER OR OTHER PARTY HAS BEEN ADVISED OF THE POSSIBILITY OF SUCH DAMAGES.

END OF TERMS AND CONDITIONS

How to apply these terms to your new libraries

If you develop a new library, and you want it to be of the greatest possible use to the public, we recommend making it free software that everyone can redistribute and change. You can do so by permitting redistribution under these terms (or, alternatively, under the terms of the ordinary General Public License).

To apply these terms, attach the following notices to the library. It is safest to attach them to the start of each source file to most effectively convey the exclusion of warranty; and each file should have at least the "copyright" line and a pointer to where the full notice is found.

Copyright (C)

This library is free software; you can redistribute it and/or modify it under the terms of the GNU Lesser General Public License as published by the Free Software Foundation; either version 2.1 of the License, or (at your option) any later version.

This library is distributed in the hope that it will be useful, but WITHOUT ANY WARRANTY; without even the implied warranty of MERCHANTABILITY or FITNESS FOR A PARTICULAR PURPOSE. See the GNU Lesser General Public License for more details.

You should have received a copy of the GNU Lesser General Public License along with this library; if not, write to the Free Software Foundation, Inc., 51 Franklin Street, Fifth Floor, Boston, MA 02110-1301 USA

Also add information on how to contact you by electronic and paper mail.

You should also get your employer (if you work as a programmer) or your school, if any, to sign a "copyright disclaimer" for the library, if necessary. Here is a sample; alter the names:

Yoyodyne, Inc., hereby disclaims all copyright interest in the library `Frob' (a library for tweaking knobs) written by James Random Hacker.

signature of Ty Coon, 1 April 1990
Ty Coon, President of Vice

C

CAN Controller-Area Network. A message based protocol designed to allow microcontrollers and devices to communicate with each other within a vehicle without a host computer.

CD Compact Disk. An optical disc used to store digital data.

D

DNIC Data Network Identification Code

E

EGC Enhanced Group Call. A type of broadcast data for ships.

ENID EGC Network IDentification. An identification code used for reception of EGCs.

G

GMDSS Global Maritime Distress Safety System. The GMDSS system is intended to perform the following functions: alerting (including position determination of the unit in distress), search and rescue coordination, locating (homing), maritime safety information broadcasts, general communications, and bridge-to-bridge communications.

GNSS Global Navigational Satellite System

GNU GNU's Not Unix. A Unix-like computer operating system developed by the GNU project, ultimately aiming to be a "complete Unix-compatible software system" composed wholly of free software

GPL General Public License

GPS Global Positioning System. A system of satellites, computers, and receivers that is able to determine the latitude and longitude of a receiver on Earth by calculating the time difference for signals from different satellites to reach the receiver.

I

IMN Inmarsat Mobile Number

IMSO International Maritime Satellite Organisation. An intergovernmental body established to ensure that Inmarsat continues to meet its public service obligations.

ISP Inmarsat Service Provider. The company providing the Inmarsat services.

L

LAN Local Area Network. A computer network covering a small physical area, like a home, office, school or airport. The defining characteristics of LANs, in contrast to wide-area networks (WANs), include their usually higher data-transfer rates, smaller geographic area, and lack of a need for leased telecommunication lines.

LES Land Earth Station

LGPL Lesser General Public License

LRIT Long Range Identification and Tracking. A system established by the IMO applying to all passenger ships, cargo ships > 300 gross tonnage and mobile offshore drilling units. These ships/units must automatically report their position to their Flag Administration at least 4 times a day. Other contracting governments may request information about vessels in which they have a legitimate interest under the regulation.

M

METAREA	The geographic areas in which various governments are responsible for meteorological warnings.
mobile	Mobile terminal. In this context the Mini-C Terminal
MRCC	Maritime Rescue Co-ordination Centre
MSI	Maritime Safety Information. Maritime Safety Information. An internationally coordinated network of broadcasts of Maritime Safety Information from official information providers, such as National Hydrographic Offices, National Meteorological Offices, Rescue Co-ordination Centres (RCCs), and The International Ice Patrol, for Oceanic ice hazards.

N

NAVAREA	The geographic areas in which various governments are responsible for navigation and weather warnings.
NCS	Network Coordination Station

P

PSDN	Public Switched Data Network
PSTN	Public Switched Telephone Network. The network of the world's public circuit-switched telephone networks. It consists of telephone lines, fibre-optic cables, microwave transmission links, cellular networks, communications satellites, and undersea telephone cables all inter-connected by switching centres which allows any telephone in the world to communicate with any other.
PU	Position Unreserved

S

SAC	Short Access Code
SAR	Search And Rescue
SARF	Service Activation Registration Form. A form used to register your mobile equipment for activation of the services you are going to use.
SNMP	Simple Network Management Protocol. An Internet-standard protocol for managing devices on IP networks. It is used mostly in network management systems to monitor network-attached devices for conditions that warrant administrative attention.
SOLAS	(International Convention for the) Safety Of Life At Sea. Generally regarded as the most important of all international treaties concerning the safety of merchant ships.
SSA	Ship Security Alert. The ship security alert system is provided to a vessel for the purpose of transmitting a security alert to the shore (not to other vessel!) to indicate to a competent authority that the security of the ship is under threat or has been compromised.

T

TCU	Terminal Control Unit
-----	-----------------------

A

- activation of service, 9
- auto-print
 - EGCs and messages, 56

B

- buttons
 - Distress, using, 60
 - SSA, using, 62

C

- clear protocol, 39
- conformity, 69
- contacts, 30

D

- data file, send, 24
- data reporting and polling
 - description of service, 8
- deleting
 - EGC, 37
 - message, 29
- Distress
 - button test, 20
 - clear indications, 61
 - description of service, 5
 - message, write, 17
 - sending alert with SAILOR 6108, 60
 - settings, 17
- Distress position, 19
- document number
 - this manual, i

E

- easyMail
 - menu overview, 16
 - using LAN, 53
 - using RS-232, 55
- EGC
 - auto-print, 56
 - deleting, 37
 - description of service, 6
 - receiving, 36
 - setup, 44
- event log, 67

G

- GNU General Public License, 75
- GNU Lesser General Public License, 79

I

- Inbox, 29
- info log, 67

L

- LAN
 - setup with easyMail, 53
- LES number
 - list of supported, 47
- link test, 39
- login, 38

M

- manual
 - document number, i
- menu overview, 16
- message
 - auto-print, 56
 - deleting, 29
 - Distress, 17
 - Inbox, 29
 - options, 25
 - Outbox, 30
 - sent items, 30
 - writing, 23
- messaging
 - description of service, 7
- mobile number
 - entering, 50

N

- network
 - login, 38
 - scan, 38
 - view status, 38

O

- Outbox, 30

P

- position
 - for Distress, 19
 - viewing, 41
- position information, 8
- position reporting
 - description of service, 7

- powering the system, 10
- protocol, clear, 39

R

- receiving EGCs, 36
- registration, 9
- reporting position, 8
- RS-232
 - communication with easyMail, 55

S

- safety summary, iv
- SAILOR 6108 or SAILOR 3042E
 - sending Distress alert, 60
- scan, 38
- sent items, 30
- serial communication with easyMail, 55
- service activation, 9
- services
 - data reporting and polling, 8
 - Distress, 5
 - EGC, 6
 - Inmarsat C details, 5
 - messaging, 7
 - position reporting, 7
- sound
 - testing, 21
- special access codes, 32
- SSA buttons
 - using, 62
- starting up, 10
- status
 - network, 38
 - signalling, 67
- support, 63

system overview
 total, 2
system units, 3

T

transmission stop, 39
troubleshooting, 63
typography used in this manual, vii

U

units in the system, 3
user interface, 4

W

warranty, 68
writing messages, 23

98-131590-A